

StrolTM

FilterSleeveTM

Installation Guidelines

G 028 002

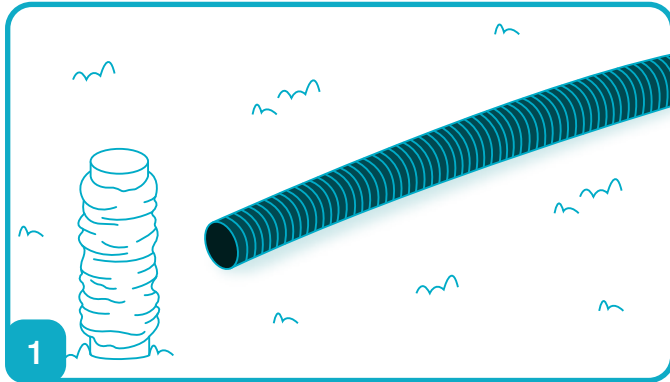
Issue No.: 01

November 2022

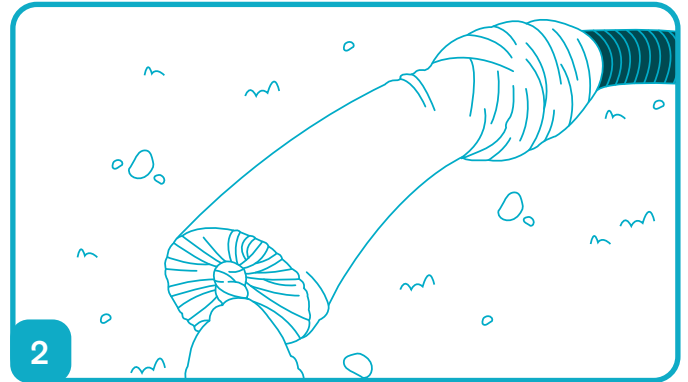


FilterSleeve

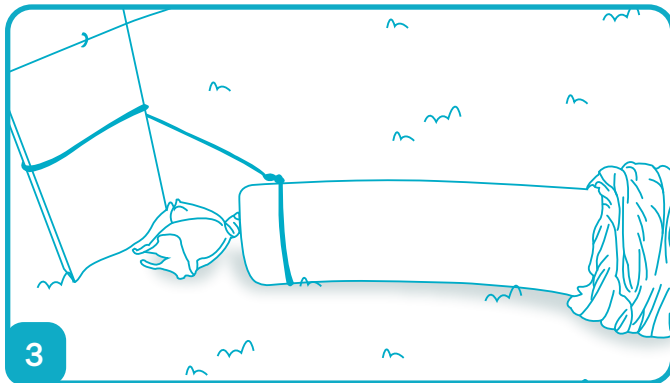
Installation Instructions



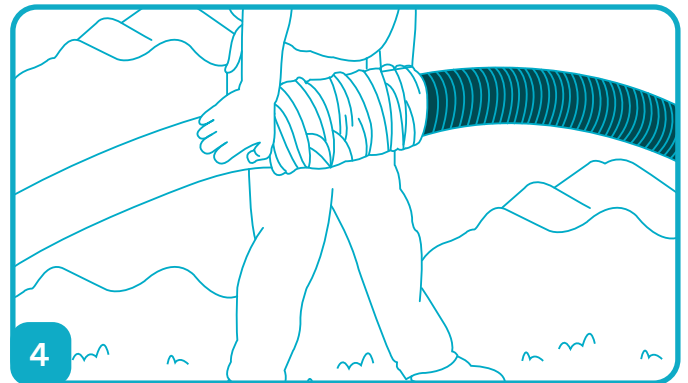
Ensure that the drainage pipe to be covered is uncoiled as much as possible, preferably alongside a pre-dug trench with your FilterSleeve ready to be applied.



Thread the drainage pipe through the centre of the applicator and tie a temporary knot on the FilterSleeve to prevent it sliding back over the pipe end.



Secure the end of the pipe to an anchor point (e.g., post, tree, vehicle, etc...)



Holding the drainage pipe and applicator along the length of the pipe, maintain even tension on the FilterSleeve as you feed it to the other end for maximum yield.

DISCLAIMER

All information provided in this brochure is correct to the best knowledge of the company and is given out in good faith. The information presented herein is intended only as a general guide to the use of such products and no liability is accepted by Strol Ltd for any loss or damage however arising, which results either directly or indirectly from use of such information. Strol Ltd have a policy of continuous development therefore information and product specifications may change without notice. This brochure is subject to copyright in its entirety. The contents may not be reproduced in any form, either in whole or in part, without written permission from Strol Ltd. While every effort has been made to ensure the accuracy of the information in this brochure, Strol Ltd assumes no responsibility for errors or omissions or for any consequences of reliance on this catalogue. Copyright 2022. All rights reserved.