



**CIRTEX**<sup>®</sup>  
GAIN MORE GROUND

# T-MAX

---

## INSTALLATION GUIDELINES EROSION PROTECTION APPLICATIONS

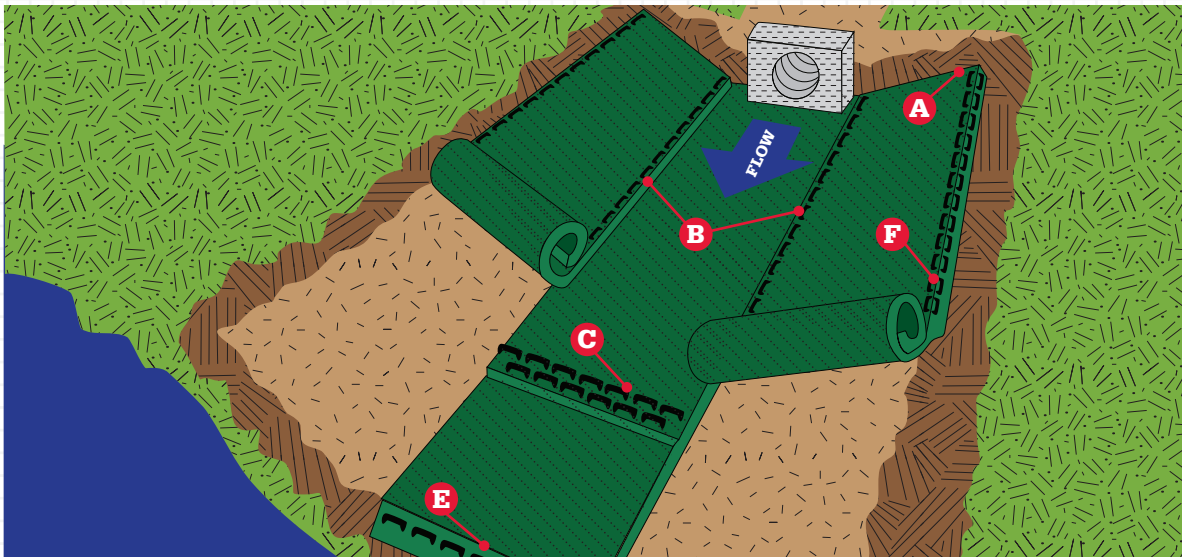
ISO: G 062 010 | DATE: SEPTEMBER 2023 | VERSION 1



**1800 012 681 | [WWW.CIRTEX.COM.AU](http://WWW.CIRTEX.COM.AU)**

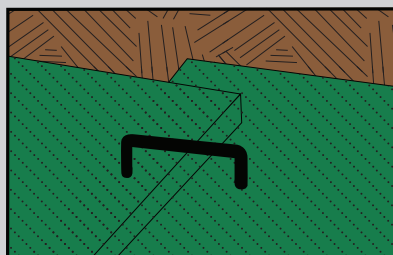
# CHANNEL INSTALLATION DETAIL

1. Dig a 15cm by 15cm trench both up-slope, down-slope, and along the top side of the channel. Prepare the slope soil surface (raking, seeding and fertilising). Note, if used with stormwater discharge, place the up-slope trench at the face of the discharge structure footer.
2. Begin by placing the centre blanket a minimum of 30cm down-slope of the up-slope trench. Secure the blanket at the bottom of the trench with staples placed 30cm apart. Backfill and compact the trench. Apply seed, and fold the blanket over the soil, secure with a row of staples placed 30cm apart across the width of the blanket (See diagram A).
3. Roll the blanket vertically down the slope. Secure using the appropriate staple pattern below, specified by slope. (See staple patterns).
4. Continue placing blankets up the slopes on both sides, with a minimum 10cm overlapping (Diagram B), and securing each blanket in the beginning trench (Diagram A).
5. Additional horizontal blankets can be joined using a minimum 10cm overlapping or shingle style in the direction of water flow. Connect the blankets by placing staples approximately 13cm apart across the width of the blankets (Diagram C).
6. For maximum performance a check slot should be placed at 8cm-12m intervals. Place a row of staples 10cm apart along the entire width of the channel. A second row should be placed below in a staggered pattern (Diagram D).
7. The end of the blanket must be secured in a 15cm by 15cm trench by a row of staples placed at 30cm intervals (Diagram E).
8. At the top edge of the slide slope, fasten the blanket in a 15cm by 15cm trench with staples placed at 30cm intervals. Install an additional row of staples 30cm down slope of the trench along the width of the fabric (Diagram F).



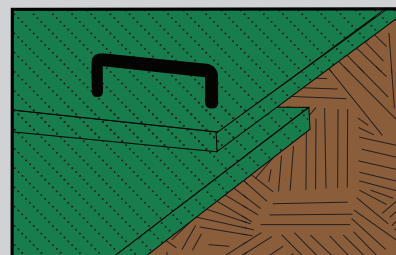
DIAGRAM

**B**



DIAGRAM

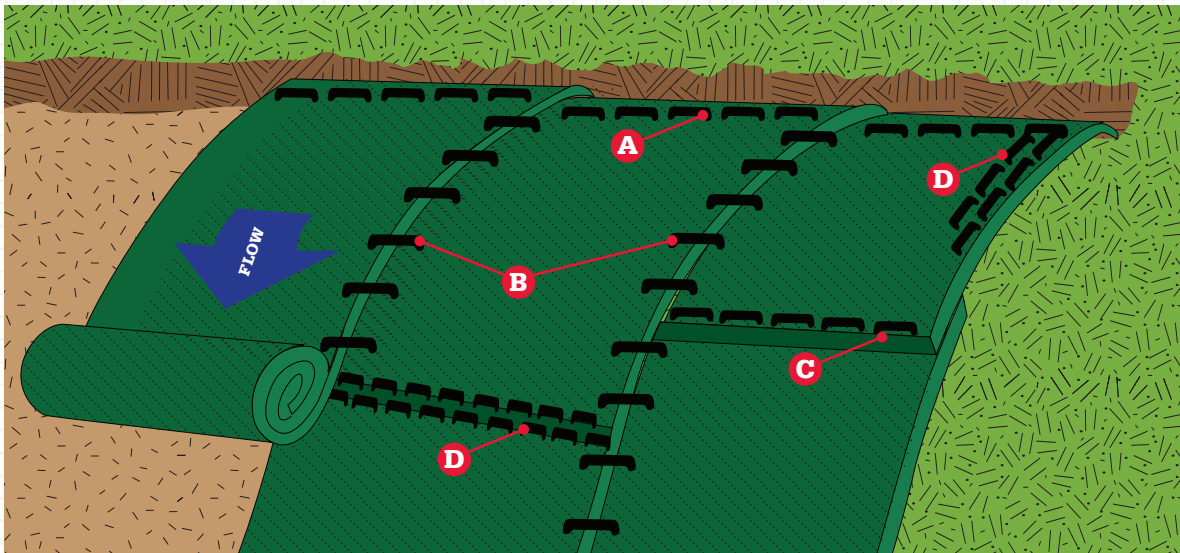
**C**



# SLOPE INSTALLATION DETAIL

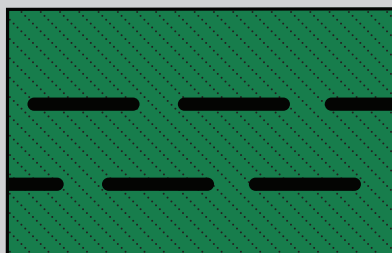
These guidelines are recommendations only.

1. Dig a 15cm by 15cm trench both up-slope and down-slope of the area the matting is to be applied. Prepare the slope soil surface (raking, seeding and fertilising).
2. Begin by placing the blanket a minimum of 30cm down-slope of the up-slope trench. Secure the blanket at the bottom of the trench with staples placed 30cm apart. Backfill and compact the trench. Apply seed, and fold the blanket over soil, secure with a row of staples placed 30cm apart across the width of the blanket (See diagram A).
3. Roll the blanket vertically down the slope. Secure using the appropriate staple pattern below, specified by slope (See staple patterns).
4. Parallel blankets must be overlapped by a minimum of 10cm and secured with a row of staples approximately 1m apart (See diagram B).
5. Additional vertical blankets can be joined using a minimum 10cm overlapping or shingle style (See diagram C) in the direction of the water flow. Connect the blankets by placing staples approximately 30cm apart across the width of the blankets.
6. For maximum performance a check slot should be placed at 8cm-12m intervals. Place a row of staples 10cm apart along the entire width of the slope. A second row should be placed 10cm below in a staggered pattern. Then continue with general installation (See diagram D).
7. The end of blanket must be secured in a 15cm by 15cm trench with a row of staples placed at 30cm intervals (Diagram E).



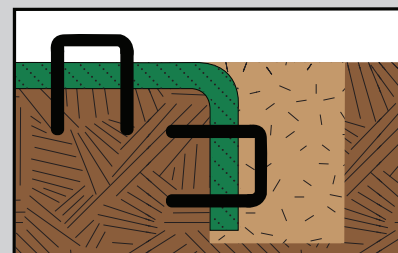
DIAGRAM

**D**



DIAGRAM

**F**

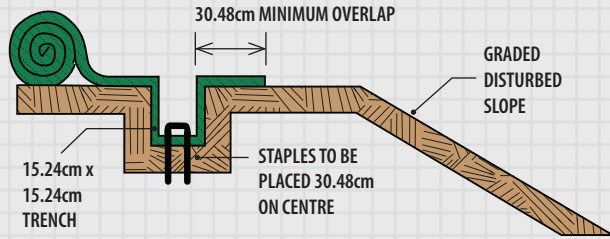


TO ORDER CALL US ON  
**1800 012 681**

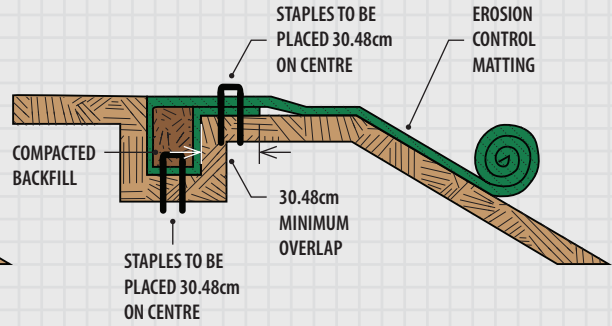
# UP-SLOPE TRENCH INSTALLATION DETAIL

DIAGRAM **A**

## STEP 1.



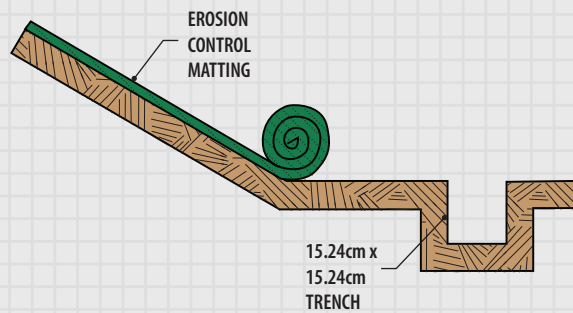
## STEP 2.



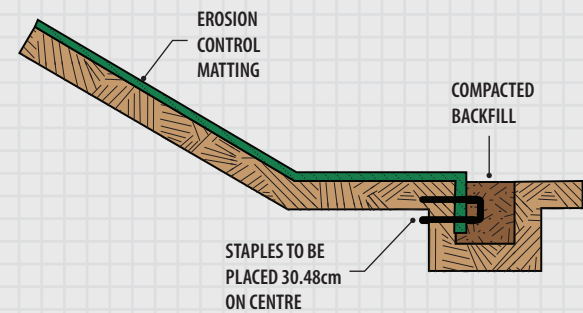
# DOWN-SLOPE TRENCH INSTALLATION DETAIL

DIAGRAM **E**

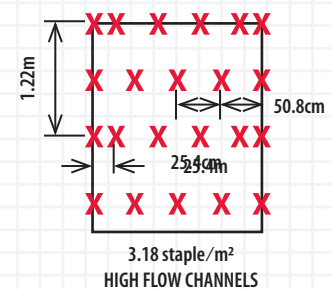
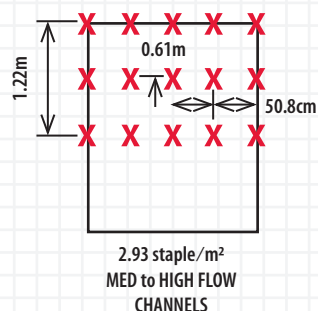
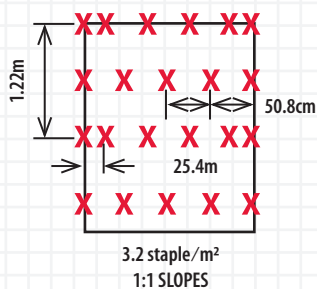
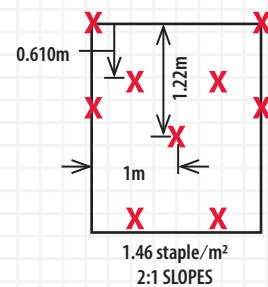
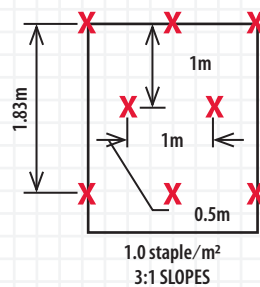
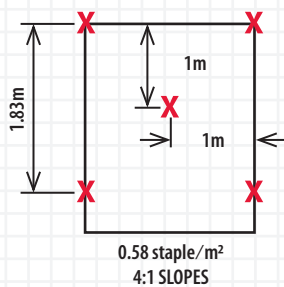
## STEP 1.



## STEP 2.



# STAPLE PATTERNS





**CIRTEX**  
GAIN MORE **GROUND**

## **CIRTEX INDUSTRIES PTY LTD**

### **Head Office**

100 Silverwater Rd  
Silverwater NSW 2128 | AU

### **Postal Address**

PO Box 7138 | Silverwater  
NSW 1811 | AU

**1800 012 681**

**[WWW.CIRTEX.COM.AU](http://WWW.CIRTEX.COM.AU)**

---

### **DISCLAIMER**

All information provided in this document is correct to the best knowledge Cirtex Industries Pty Ltd ("Cirtex") and is given out in good faith. While every effort has been made to ensure the accuracy of the information in this catalogue, Cirtex assumes no responsibility for errors or omissions or for any consequences of reliance on this catalogue. The information presented herein is intended only as a general guide to the use of such products and no responsibility or liability is accepted by Cirtex for any loss or damage however arising, which results either directly or indirectly from use of such information. Cirtex has a policy of continuous development therefore information and product specifications may change without notice. This document is subject to copyright in its entirety. The contents may not be reproduced in any form, either in whole or in part, without written permission from Cirtex. Copyright 2022. All rights reserved.