



CIRTEX ROCK BAGS

PRODUCTION FRAME, FILL AND
INSTALLATION PROCESS

ISO: G 137 002 | DATE: JULY 2023 | VERSION 1



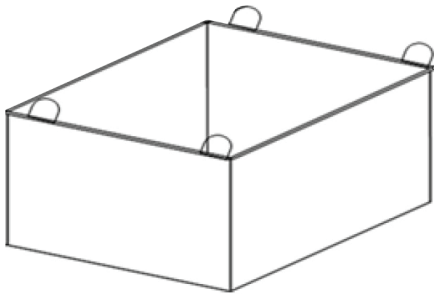
0800 247 839 | WWW.CIRTEX.CO.NZ



ROCK BAG FRAME NOTES:

The Rock Bag production frame is a fabricated frame consisting of four, smooth, welded metal plates.

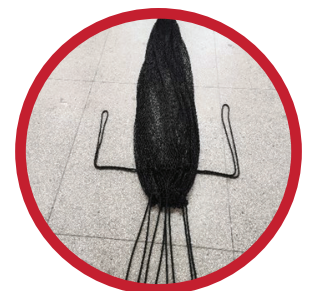
- Inspect the frame prior to use. It should be smooth with no burrs or jagged edges, to avoid damaging the Rock Bag during filling.
- The frame sizes are internal dimensions.
- Lifting points are prepared at the four corners.
- There is no base panel. Once Rock Bag is filled, the frame is lifted away, leaving the bag on the ground.



ROCKBAG STRUCTURE

- Multiple layers of Polyester mesh.
- Consists of mesh threads, lifting threads and tying threads.

Filling Frame	Metric		
	Length	Width	Height
2 Ton	1200mm	1200mm	920mm
4 Ton	1500mm	1500mm	1200mm
8 Ton	1950mm	1950mm	1500mm



FILL PROCESS

1

Lay Rock Bag into and drape over the production frame.



2

Carefully & safely fill production frame to a consistent height with rock (material).



3

Once full, gather support ropes.



4

Run the support ropes through and around ring, raise ring to slightly tighten Rock Bag. The secondary rope must be tied tightly around the neck of the stretched support ropes & ring.



5

Slowly lift the production frame off Rock Bag.



6

Set frame down and lift Rock Bag up by the ring.



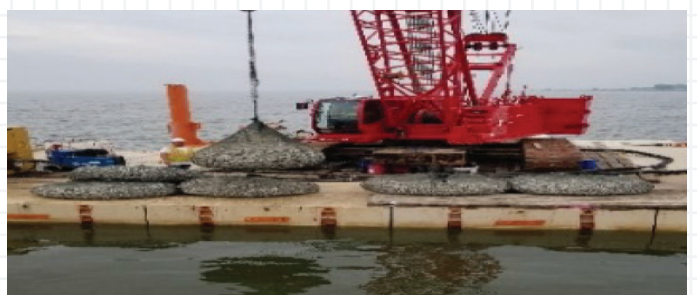
7

Safely transport to loading location or construction site.



8

At site, lift Rock Bags up off transport (do not drag) and set into position.





DISCLAIMER

The information provided in this publication is correct to the best knowledge of the company and is given out in good faith. The information presented herein is intended only as a general guide to the use of such products and no liability is accepted by Cirtex Industries Ltd for any loss or damage however arising, which results either directly or indirectly from the use of such information. Cirtex Industries Ltd has a policy of continuous development so information and product specifications may change without notice.

CIRTEX INDUSTRIES LTD

Head Office

16 Queen Street | Kopu
Thames 3578 | NZ

Postal Address

PO Box 470 | Thames 3540 | NZ

0800 CIRTEX (247 839)

WWW.CIRTEX.CO.NZ