



CIRTEX ROCK BAGS

PRODUCTION FRAME, FILL AND
INSTALLATION PROCESS

ISO: G 137 004 | DATE: JULY 2023 | VERSION 1



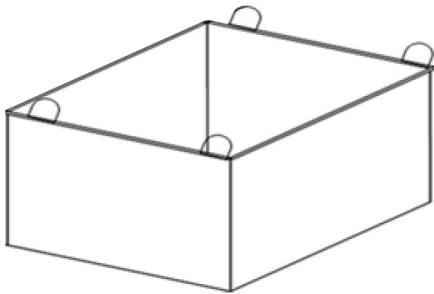
1800 012 681 | WWW.CIRTEX.COM.AU



ROCK BAG FRAME NOTES:

The Rock Bag production frame is a fabricated frame consisting of four, smooth, welded metal plates.

- Inspect the frame prior to use. It should be smooth with no burrs or jagged edges, to avoid damaging the Rock Bag during filling.
- The frame sizes are internal dimensions.
- Lifting points are prepared at the four corners.
- There is no base panel. Once Rock Bag is filled, the frame is lifted away, leaving the bag on the ground.



ROCKBAG STRUCTURE

- Multiple layers of Polyester mesh.
- Consists of mesh threads, lifting threads and tying threads.

Filling Frame	Metric		
Frame Dimension	Length	Width	Height
2 Ton	1200mm	1200mm	920mm
4 Ton	1500mm	1500mm	1200mm
8 Ton	1950mm	1950mm	1500mm



TO ORDER CALL US ON:
1800 012 681

FILL PROCESS

1

Lay Rock Bag into and drape over the production frame.



2

Carefully & safely fill production frame to a consistent height with rock (material).



3

Once full, gather support ropes.



4

Run the support ropes through and around ring, raise ring to slightly tighten Rock Bag. The secondary rope must be tied tightly around the neck of the stretched support ropes & ring.



5

Slowly lift the production frame off Rock Bag.



6

Set frame down and lift Rock Bag up by the ring.



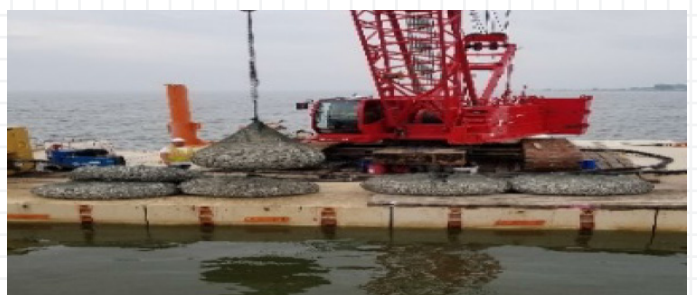
7

Safely transport to loading location or construction site.



8

At site, lift Rock Bags up off transport (do not drag) and set into position.





DISCLAIMER

All information provided in this document is correct to the best knowledge Cirtex Industries Pty Ltd ("Cirtex") and is given out in good faith. While every effort has been made to ensure the accuracy of the information in this catalogue, Cirtex assumes no responsibility for errors or omissions or for any consequences of reliance on this catalogue. The information presented herein is intended only as a general guide to the use of such products and no responsibility or liability is accepted by Cirtex for any loss or damage however arising, which results either directly or indirectly from use of such information. Cirtex has a policy of continuous development therefore information and product specifications may change without notice. This document is subject to copyright in its entirety. The contents may not be reproduced in any form, either in whole or in part, without written permission from Cirtex. Copyright 2022. All rights reserved.

CIRTEX INDUSTRIES PTY LTD

Head Office

100 Silverwater Rd, Silverwater
NSW 2128, Australia

Postal Address

PO Box 7138, Silverwater
NSW 1811, Australia

1800 012 681

WWW.CIRTEX.COM.AU