

CASE STUDY

PINESONG

RETIREMENT VILLAGE

AUCKLAND

DURAMAT RF HEAVY DUTY TURF REINFORCEMENT MATTING



CONTRACTOR	Earth Stability
ENGINEER	Harrierson & Grierson, Soil & Rock Consultants
CLIENT	Metlifecare
LOCATION	Pinesong, Titirangi, Auckland
PRODUCTS USED	DuraMat RF Heavy Duty Turf Reinforcement Matting, AquaDuct, T-RECS Turf Reinforcement Matting, Platipus® S8 Anchors

**ADVANCED
GEOSYNTHETIC
SOLUTIONS**

PROJECT

Pinesong Retirement Village is located on the coast of Titirangi in Auckland. The main 5 storey building stands tall on a steep cliff face right above the sea, offering fantastic 180-degree views overlooking the Auckland harbour.

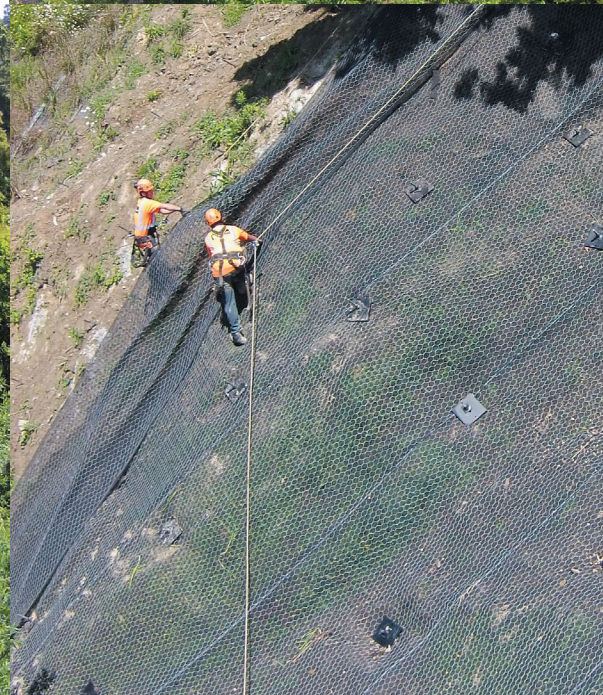
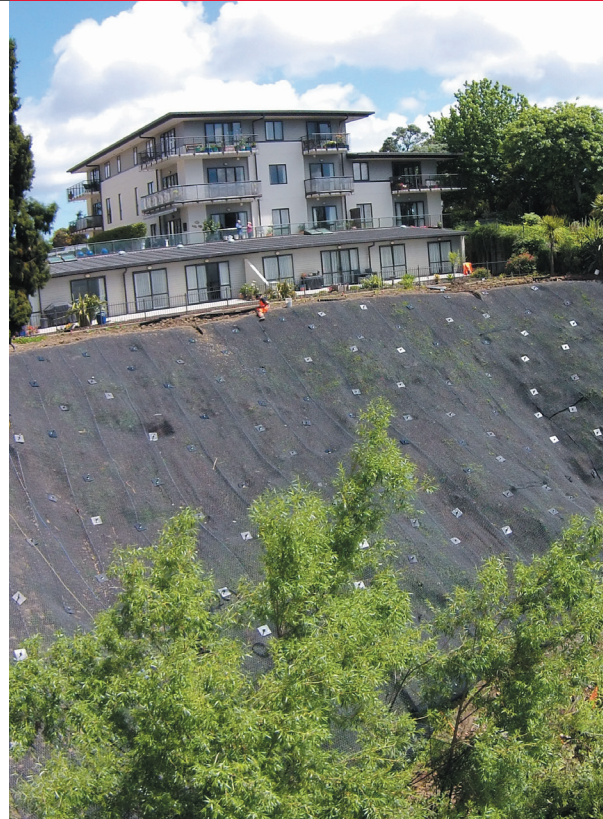
There had been several slips that were starting to endanger the foundations of the building, and Earth Stability was contracted to soil nail and retain the face of the cliff to prevent any future slips from occurring.

DESIGN

Cirtex provided DuraMat RF which was placed across 1,100m² of the exposed cliff face to retain the soil and allow vegetation to grow, while also allowing anchors to be drilled through it. DuraMat RF is a double twist steel mesh reinforced with a 3-dimensional composite matting that provides high strength and low elongation, preventing scour while assisting vegetation growth.

INSTALLATION

Along with DuraMat RF – AquaDuct, T-RECS turf reinforcement matting and over 300 Platipus® S8 anchors were used. The project was completed successfully, and there has been no further erosion of the cliff face.



CIRTEX INDUSTRIES LTD
PHONE +64 7 868 9909 FAX +64 7 868 3435

0800 CIRTEX (247 839) | INFO@CIRTEX.CO.NZ | WWW.CIRTEX.CO.NZ

