



ENVIROSIEVE

TURBIDITY CURTAINS

INSTALLATION GUIDELINES

ISO: G 023 002 | DATE: JUNE 2020 | VERSION 1



0800 247 839 | WWW.CIRTEX.CO.NZ



INSTALLATION AND JOINING GUIDE FOR ENVIROSIEVE TURBIDITY CURTAINS

JOINING THE CURTAIN

A small joining kit is attached to each curtain



STEP 1.

Take off 1 or 2 string ties (next to the end to be joined) so you are able to spread out the ends with the zips of both curtains.



Undo/cut the 2 ties next to the end to be joined and spread out

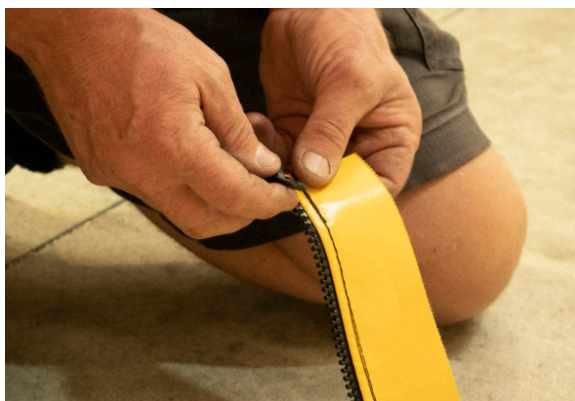


FOR FURTHER INFORMATION VISIT
WWW.CIRTEX.CO.NZ



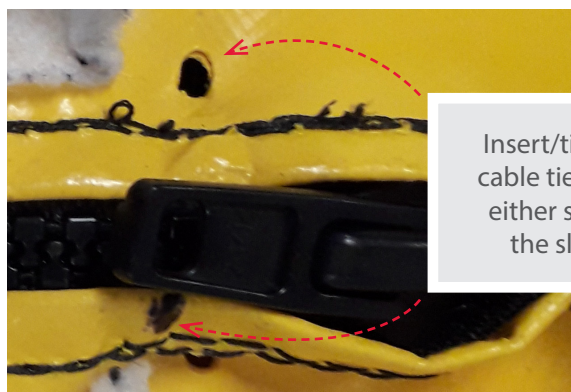
STEP 2.

Fit the supplied zip slider over both zips at the top of the curtain & zip together finishing at the bottom – (Leave the slider on the zip)



STEP 3.

Take the cable ties provided and fit one onto the top of the curtain through holes close to the zip and pull tight. This is to stop the zip coming undone. Now take 2 cable ties and attach over the bottom of the zip into the 2 holes provided and pull tight (either side of the zip slider so this can't move or come undone).



Insert/tighten cable ties here, either side of the slider



TO ORDER CALL US ON
0800 CIRTEX (247 839)



STEP 4.

Join chain – Undo the D shackle from the eyelit at the base of both curtains and join the chain directly together.



STEP 5.

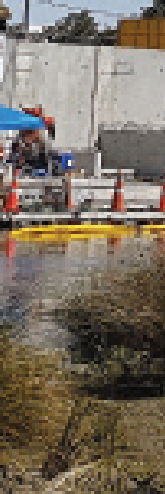
Now take the bolts, nuts and washers out of the kit and fit them through the aligned flaps at the top of the curtain – this will give extra strength, so unnecessary load is not placed on the zip join.



The curtain is now ready to feed out into the water



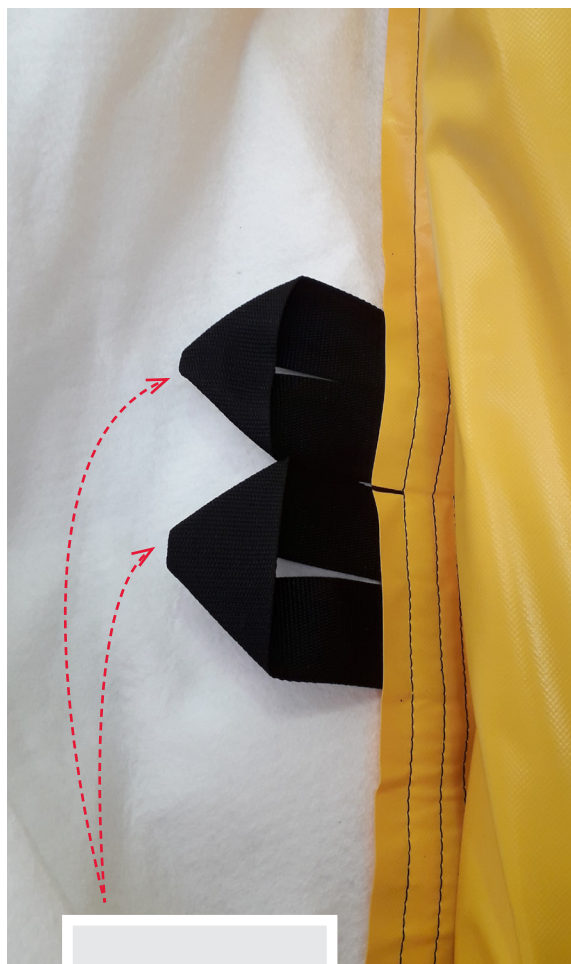
FOR FURTHER INFORMATION VISIT
WWW.CIRTEX.CO.NZ



INSTALLING THE CURTAIN IN THE WATER

When the curtain is received it will be tied up, with the fabric and chain pulled into a bundle. Apart from releasing a couple of strings for joining the curtain it is best to leave tied up until it has been floated on the water into position.

1. If multiple curtains are required, joining is best done before floating on the water – see details for joining the ends together. It is important this is done correctly to get full strength in the join.
2. The curtain should be floated out with the webbing loops facing the land side (or where the anchor points are located)
3. ***The curtain should be held in place by appropriate anchors. Tie-backs or ropes should be attached to webbing loops placed at 5 metre intervals along the curtain. At the base of the curtain anchor points should be linked to each end of the chain.***
4. Once you have all your anchor points attached, the string can be cut allowing the curtain to drop below the surface.



Webbing loops for anchoring

DISCLAIMER

The information provided in this publication is correct to the best knowledge of the company and is given out in good faith. The information presented herein is intended only as a general guide to the use of such products and no liability is accepted by Cirtex Industries Ltd for any loss or damage however arising, which results either directly or indirectly from the use of such information. Cirtex Industries Ltd has a policy of continuous development so information and product specifications may change without notice.



TO ORDER CALL US ON
0800 CIRTEX (247 839)

CIRTEX® INDUSTRIES LTD

Head Office

366 Ngati Maru Highway

Thames 3578 | NZ

Postal Address

PO Box 470 | Thames 3540 | NZ

0800 CIRTEX (247 839)

WWW.CIRTEXCIVIL.CO.NZ

