



SUPER SILTFENCE

INSTALLATION GUIDELINES

ISO: G 014 003 | DATE: JANUARY 2021 | VERSION 2

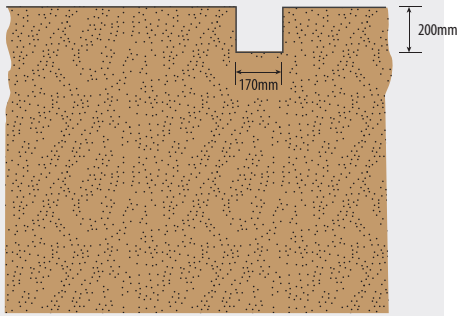
0800 247 839 | WWW.CIRTEX.CO.NZ



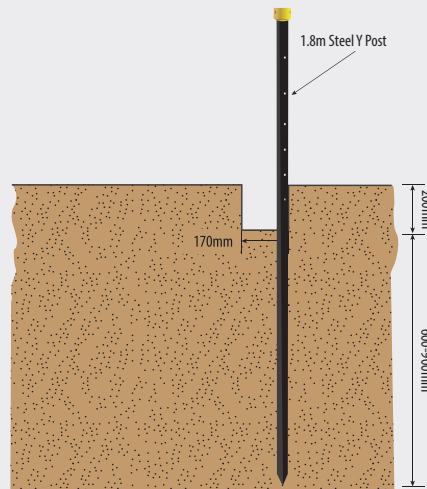
SUPER SILTFENCE

HOW TO INSTALL SUPER SILTFENCE
CORRECTLY FOLLOW THE STEPS BELOW

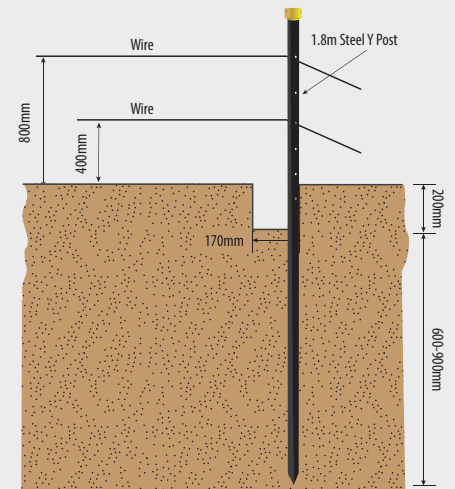
- 1** Dig a 200mm deep trench.



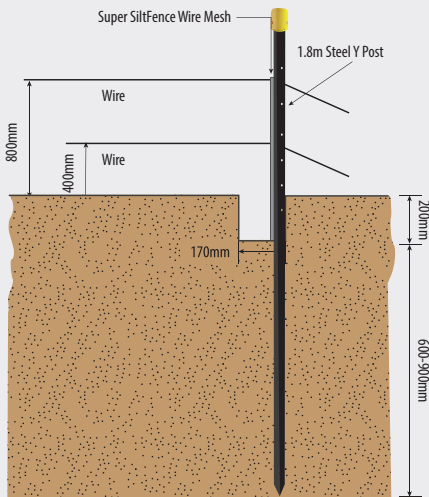
- 2** Drive Steel Y Posts 600-900mm immediately behind the trench, therefore 900mm minimum below original ground level.



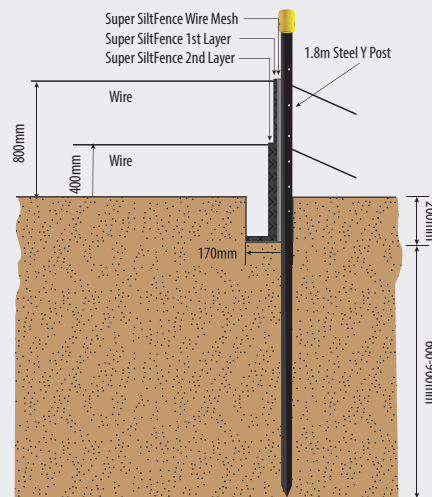
- 3** Attach two rows of galvanised wire to Steel Y Posts at 400mm and 800mm above trench, tension using a wire strainer.



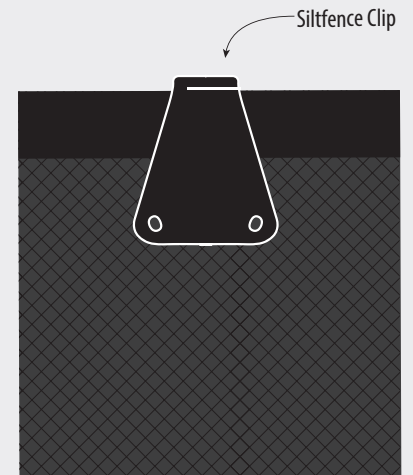
- 4** Install Super SiltFence Wire Mesh hard against the side of Steel Y Posts from base of the trench to top wire (1000mm) height.



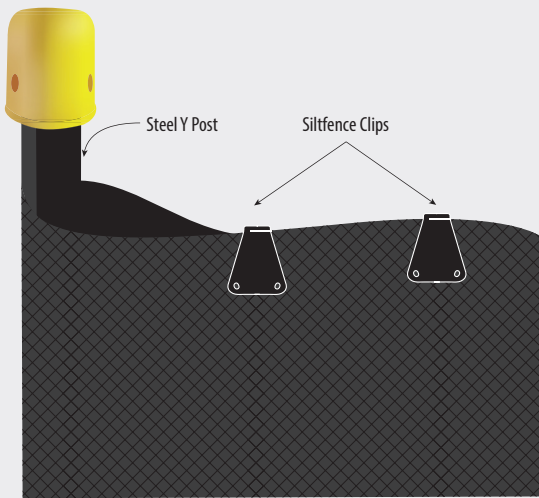
- 5** Install double layer Super SiltFence (with green strip at the bottom), with 400mm of double layer above the ground and the 400mm of single layer at the top.



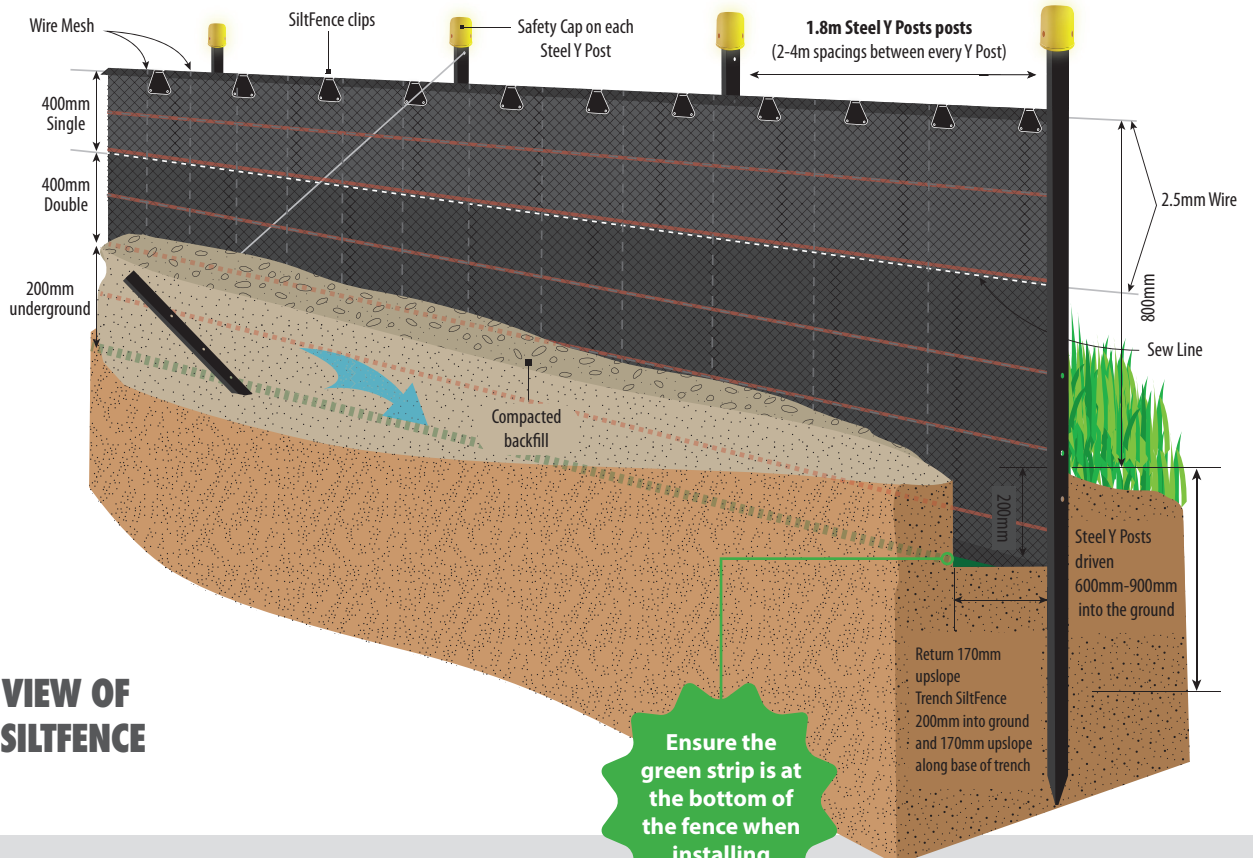
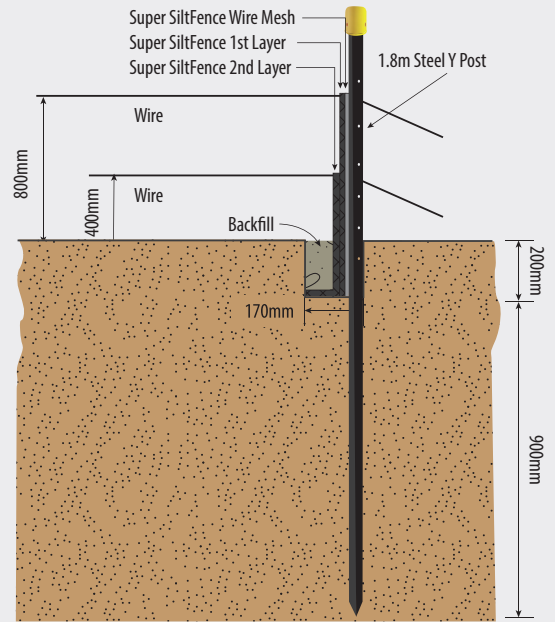
- 6** Fold the top of the Super SiltFence over the top of the wire and attach with the SiltFence clips.



7 Wrap end of Super SiltFence around the end post and secure with the SiltFence clips.

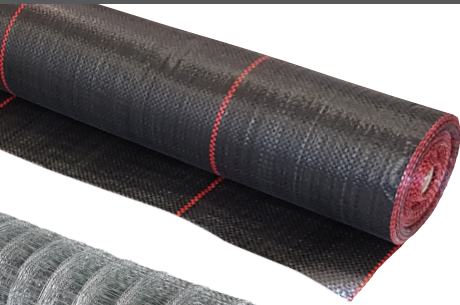


8 Backfill and compact well (critical).



INSIDE VIEW OF SUPER SILTFENCE

SUPER SILTFENCE COMPONENTS



Super SiltFence



Super SiltFence Mesh



Steel Y Posts



Wire



Safety caps



SiltFence clips

CIRTEX® INDUSTRIES LTD

Head Office

16 Queen Street | Kopu

Thames 3578 | NZ

Postal Address

PO Box 470 | Thames 3540 | NZ

0800 CIRTEX (247 839)

WWW.CIRTEX.CO.NZ



CIRTEX®
GAIN MORE GROUND

Cirtex are the erosion and sediment control specialists. To view our extensive range of building site and residential products visit

WWW.CIRTEX.CO.NZ



9 421031 138165 >