

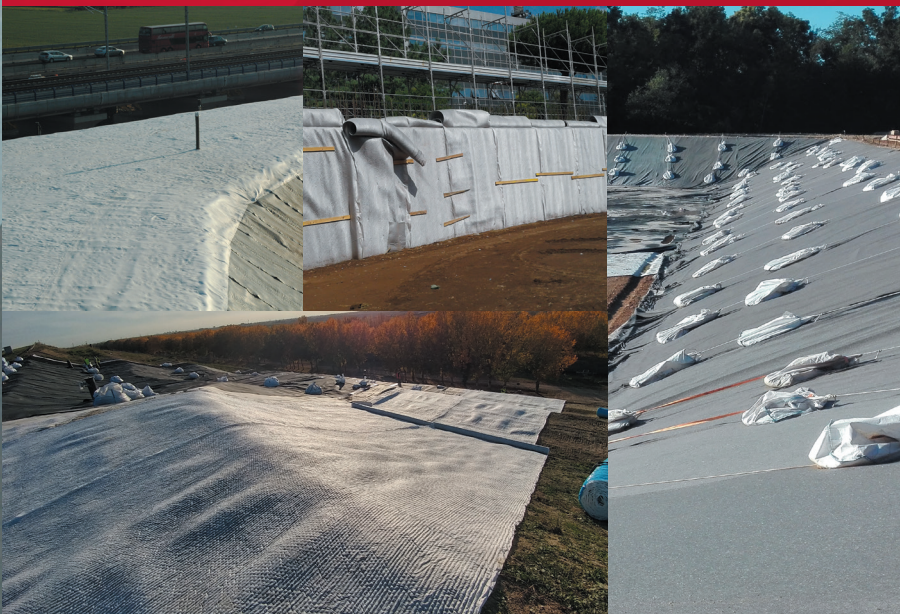


CIRTEX®
GAIN MORE GROUND

DURAFLOW Q

DRAINAGE GEOCOMPOSITE SYSTEM INSTALLATION GUIDELINES

G 003 001 | DATE: JULY 2021 | VERSION 1



1800 012 681 | WWW.CIRTEX.COM.AU

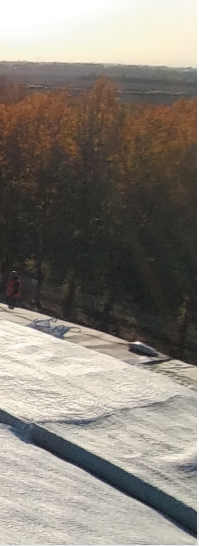
1. HANDLING & STORAGE

Drainage geocomposites rolls shall be shipped to the jobsite in a manner not to damage the rolls. The rolls shall be stored away from dirt, mud, and excessive heat.

2. PLACEMENT

1. After the geomembrane/substratum has been installed/constructed, tested and approved by the Engineer, the surface shall be clean and free of excess dirt and debris.
2. The Contractor and the Installer shall handle all geocomposite materials in such a manner as to ensure it is not damaged in any way. Precautions shall also been taken to prevent damage to underlying layers during placement of the geocomposite.
3. The geocomposite roll should be installed down the slope, and precautions taken to minimize wrinkles. The geocomposite directs flow in the machine direction (along the roll length) and thus should be installed in the intended direction of flow.
4. In the presence of wind, all geocomposite materials shall be weighted with sandbags or the equivalent. Such sandbags shall be installed during placement and shall remain until replaced with specified overlying material.
5. If there are any obstructions (such as outlet pipes or monitoring wells) while deploying the geocomposite, the geocomposite shall be cut to fit around the obstruction. Care should be taken as to make sure there is no gap between the obstruction and the geocomposite, to prevent any soil particles from migrating into the geonet core.
6. At the top of the slope, geocomposite should be insert into a small trench properly designed; dimensions of the trench depend on length and inclination of the slope, and any surcharge applied on the top of the geocompsite.





3. SEAMS AND OVERLAPS

The geomat and each component of the geocomposite will be secured or seamed to the like component at overlaps. Geomat (monofilament in PP):

- Adjacent edges of the geomat along the roll length of the geocomposite, should be overlapped minimum 10 – 15 cm, see Figure 1.

Geotextile:

- Both layers of geotextile shall be overlapped, unless the Engineer specifies differently. Refer to diagram on the following page for further details.

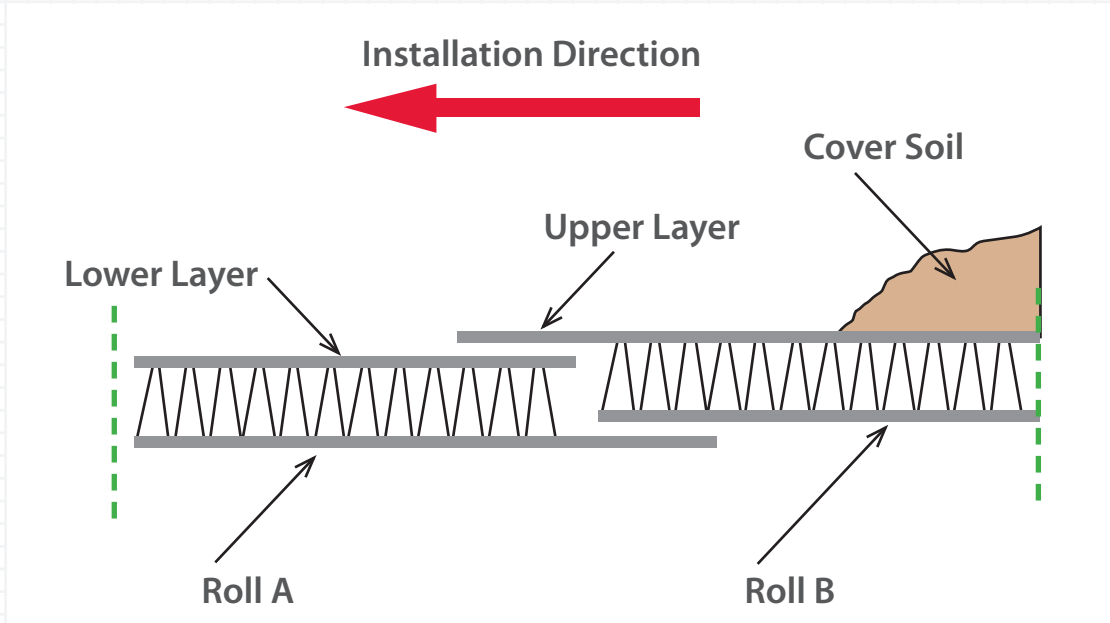


TO ORDER CALL US ON
1800 012 681



4. COVER SOIL PLACEMENT

1. Placement of the cover soil shall proceed immediately following the placement of the geocomposite and its consequent approval by the responsible party. Geocomposites usually shall be covered within 14 days.
2. No construction equipment shall operate directly on the geocomposite. The use of lightweight machinery (i.e. general low ground pressure machines) is suitable once sufficient cover material is placed to protect the geocomposite. The specified fill material shall be spreaded utilising wide track equipment. The cover soil shall be pushed over the geocomposite from the bottom of the slope proceeding upwards and in a manner which prevents instability of the cover soil, minimise wrinkles, or damage to the geocomposite.



DISCLAIMER

All information provided in this document is correct to the best knowledge Cirtex Industries Pty Ltd ("Cirtex") and is given out in good faith. While every effort has been made to ensure the accuracy of the information in this catalogue, Cirtex assumes no responsibility for errors or omissions or for any consequences of reliance on this catalogue. The information presented herein is intended only as a general guide to the use of such products and no responsibility or liability is accepted by Cirtex for any loss or damage however arising, which results either directly or indirectly from use of such information. Cirtex has a policy of continuous development therefore information and product specifications may change without notice. This document is subject to copyright in its entirety. The contents may not be reproduced in any form, either in whole or in part, without written permission from Cirtex. Copyright 2021. All rights reserved.

CIRTEX INDUSTRIES PTY LTD

100 Silverwater Road, Silverwater NSW 2181, Australia

Postal Address PO Box 7138, Silverwater NSW 1811, Australia

1800 012 681 | WWW.CIRTEX.COM.AU



CIRTEX
GAIN MORE GROUND

