



MAGNUMSTONE™

GRAVITY ESTIMATION CHARTS

Form Number: G 018 019

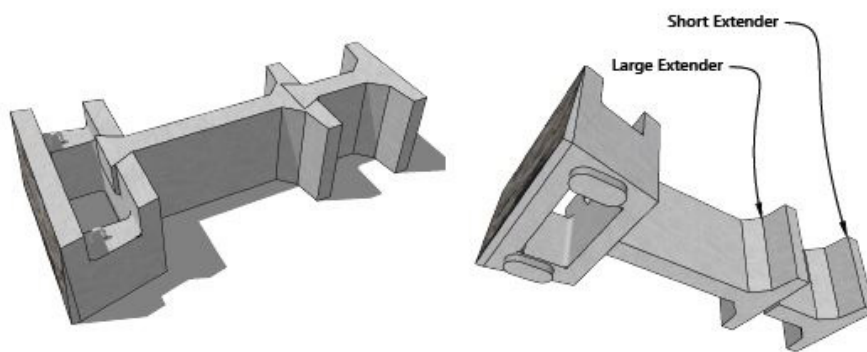
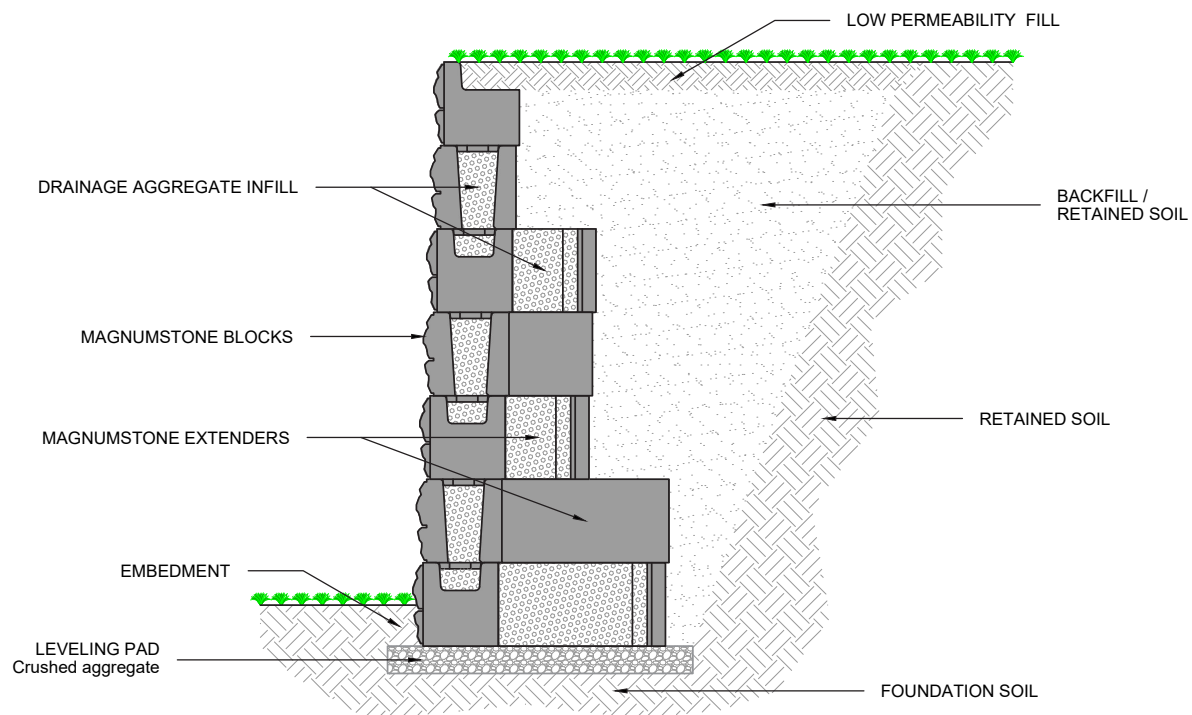
Issue Number: 02

Date: August 2022



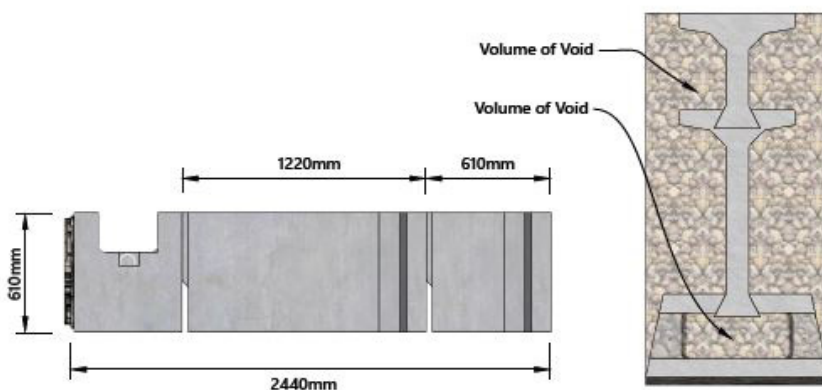
0800 247 839 | WWW.CIRTEX.CO.NZ

Gravity Retaining Wall Charts



Note: Follow proper installation guidelines as per the MagnumStone Installation Manual. Ensure local codes and guidelines are always being followed.

These preliminary details are intended solely to act as an aid when designing a wall. This drawing should not be used for final design or construction. Each site-specific wall should be certified and signed by a registered geotechnical engineer in the State or Province that it is being built. The accuracy and use of the details in this document are the sole responsibility of the user. Global stability analysis has not been performed.



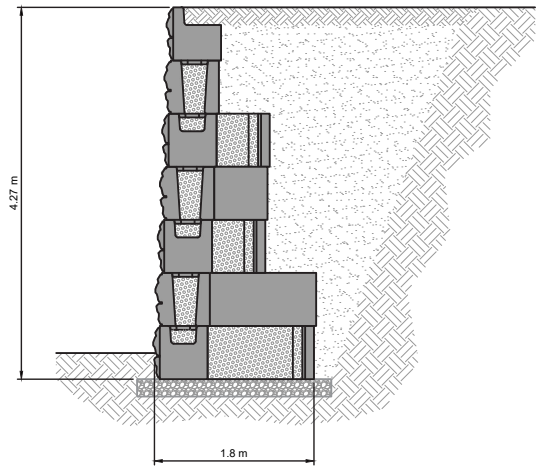
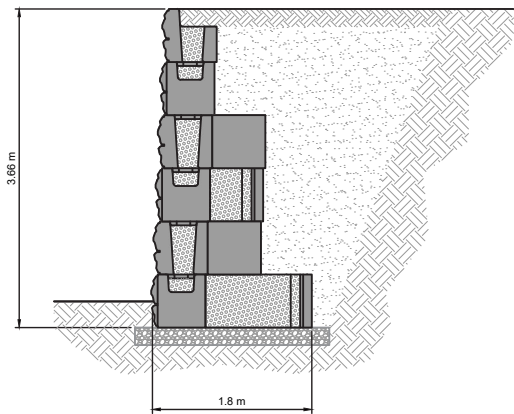
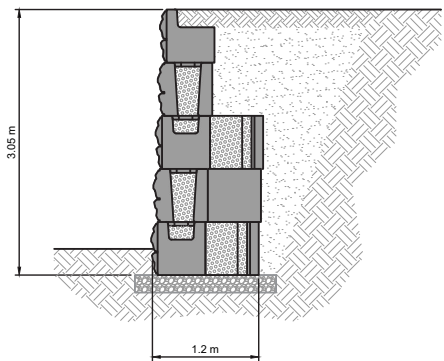
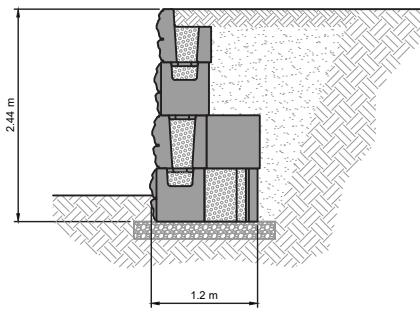
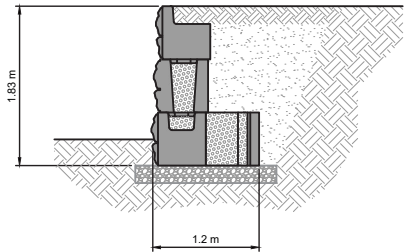
For further information visit
WWW.CIRTEX.CO.NZ

Reference NCMA Design Manual for
Segmental Retaining Walls, 3rd Edition

No Load

Gravity Wall Charts

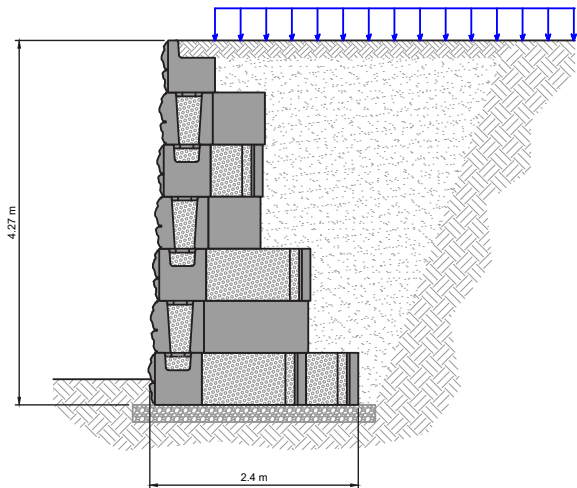
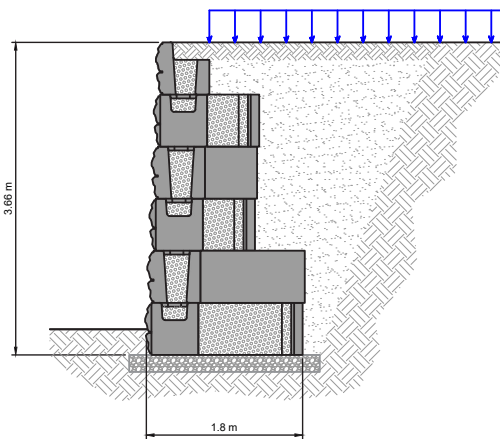
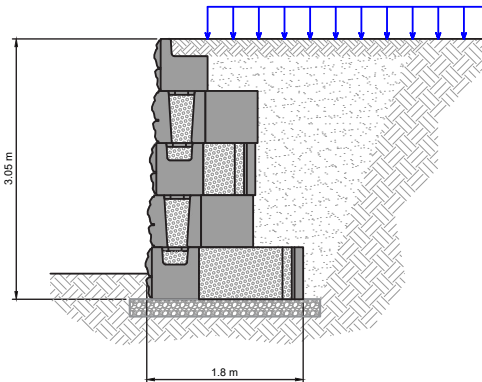
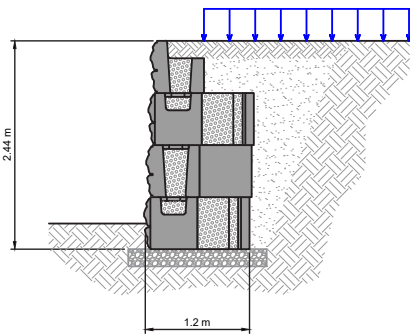
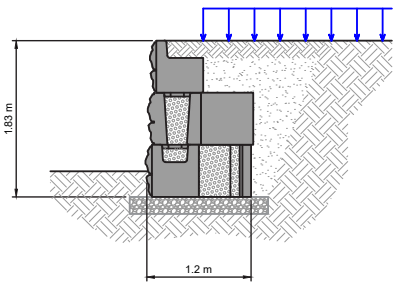
Backslope Angle	0°
Surcharge	0 kPa
Retained Soil	30°
Foundation Soil	30°
Leveling Pad	Crushed Gravel



Surcharge | 12 kPa

Gravity Wall Charts

Backslope Angle	0°
Surcharge	12 kPa
Retained Soil	30°
Foundation Soil	30°
Leveling Pad	Crushed Gravel



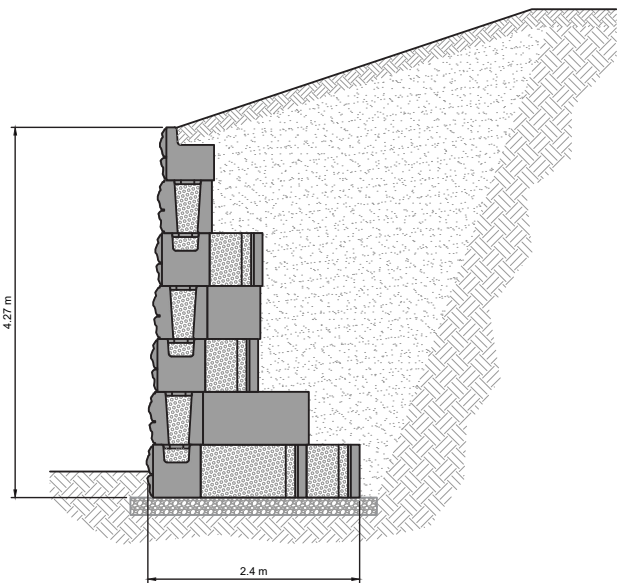
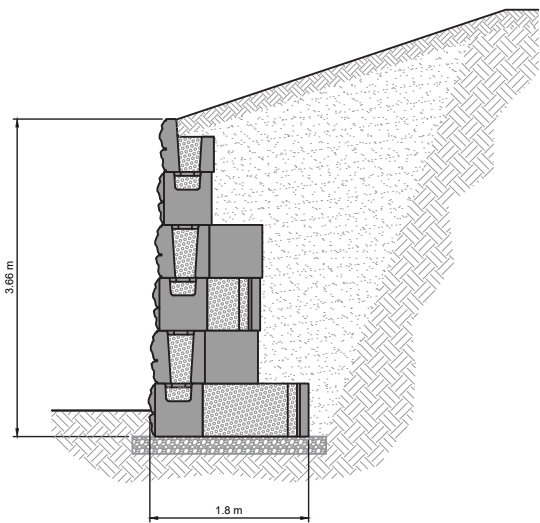
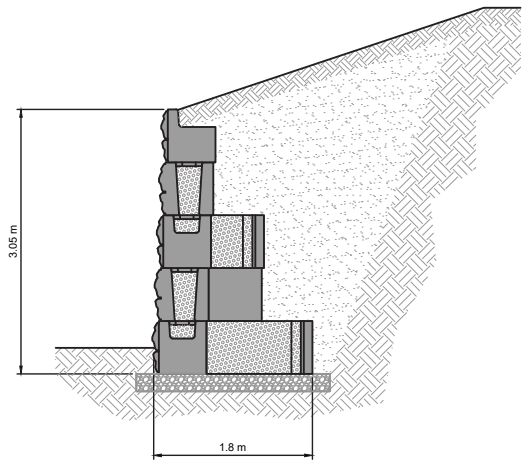
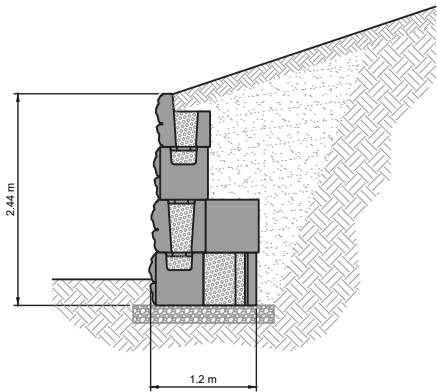
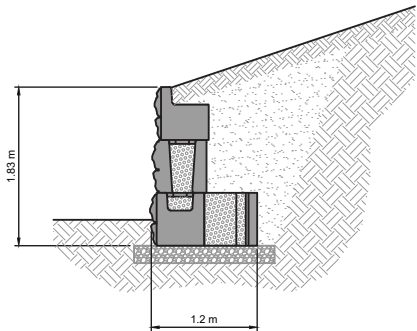
For further information visit
WWW.CIRTEX.CO.NZ

Reference NCMA Design Manual for
Segmental Retaining Walls, 3rd Edition

Backslope | 1V:3H

Gravity Wall Charts

Backslope Angle	18.4° 1V:3H
Surcharge	0 kPa
Retained Soil	30°
Foundation Soil	30°
Leveling Pad	Crushed Gravel





DISCLAIMER

The information provided in this publication is correct to the best knowledge of the company and is given out in good faith. The information presented herein is intended only as a general guide to the use of such products and no liability is accepted by Cirtex Industries Ltd for any loss or damage however arising, which results either directly or indirectly from the use of such information. Cirtex Industries Ltd has a policy of continuous development so information and product specifications may change without notice.

CIRTEX INDUSTRIES LTD

Head Office 16 Queen Street, Kopu, Thames 3578, NZ
Postal Address PO Box 470, Thames 3540, NZ

0800 247 839 | WWW.CIRTEX.CO.NZ