



MAGNUMSTONE™

GRAVITY ESTIMATION CHARTS

Form Number: G 018 018

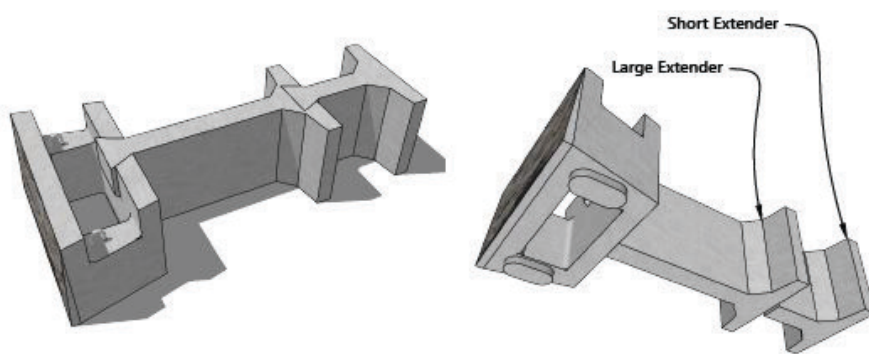
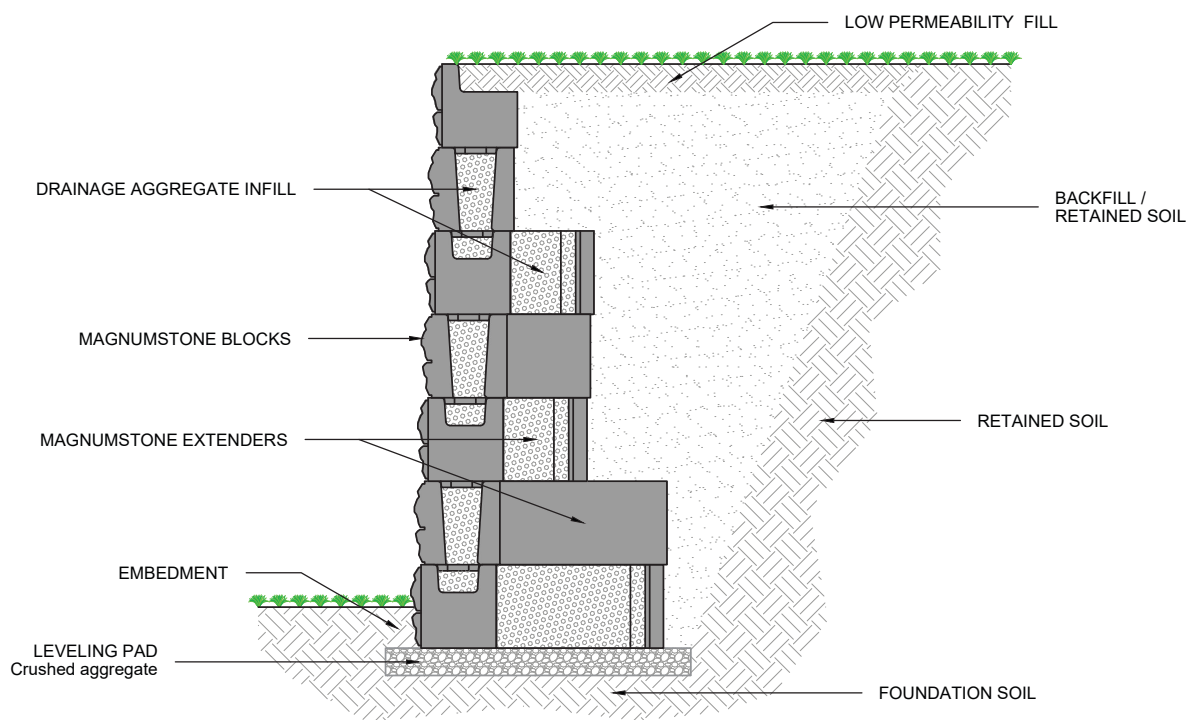
Issue Number: 02

Date: August 2022



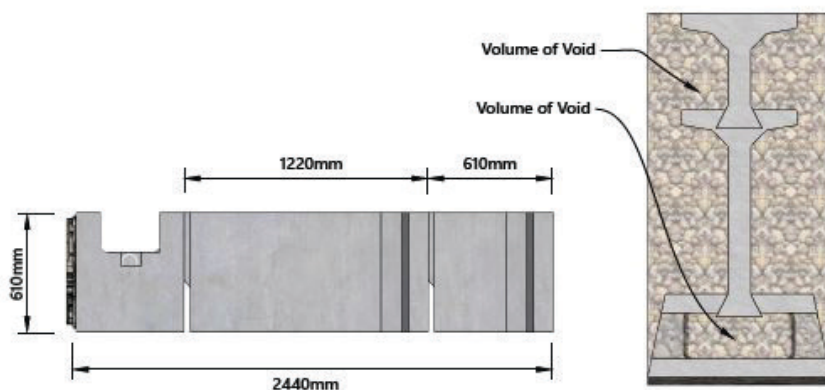
1800 012 681 | WWW.CIRTEX.COM.AU

Gravity Retaining Wall Charts



Note: Follow proper installation guidelines as per the MagnumStone Installation Manual. Ensure local codes and guidelines are always being followed.

These preliminary details are intended solely to act as an aid when designing a wall. This drawing should not be used for final design or construction. Each site-specific wall should be certified and signed by a registered geotechnical engineer in the State or Province that it is being built. The accuracy and use of the details in this document are the sole responsibility of the user. Global stability analysis has not been performed.



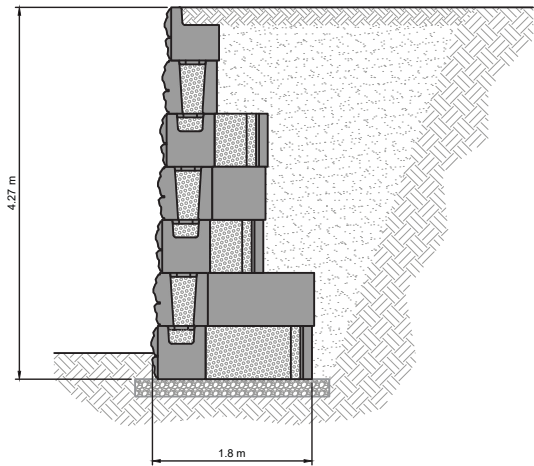
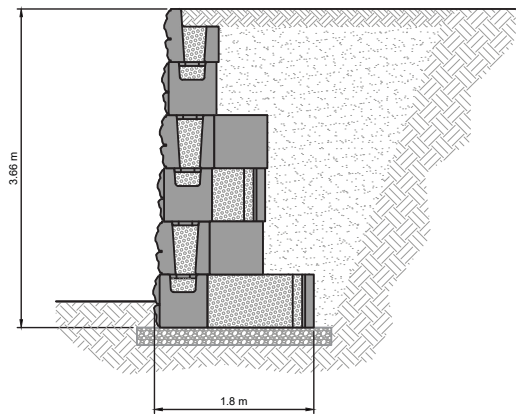
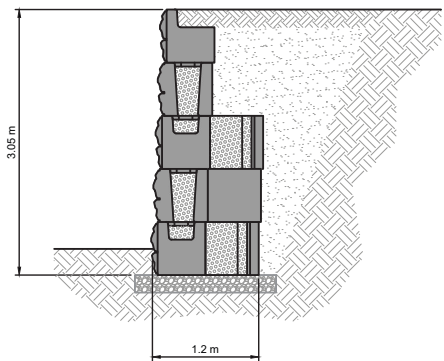
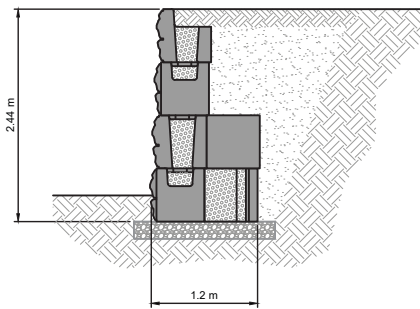
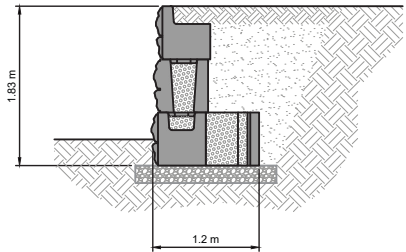
For further information visit
WWW.CIRTEX.COM.AU

Reference NCMA Design Manual for
Segmental Retaining Walls, 3rd Edition

No Load

Gravity Wall Charts

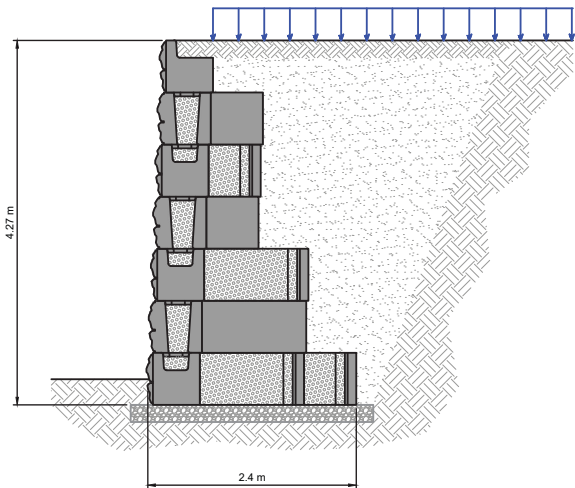
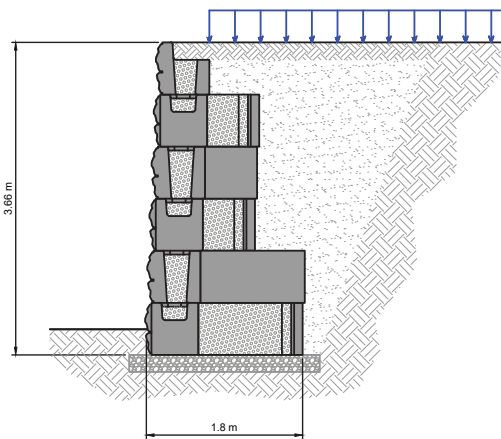
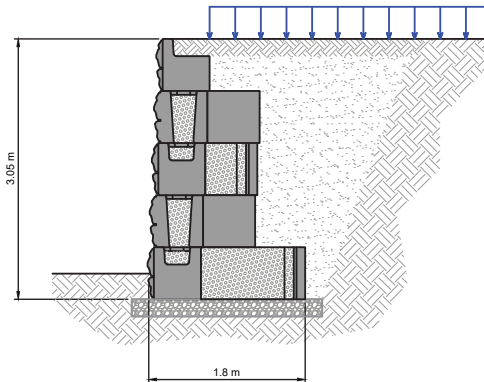
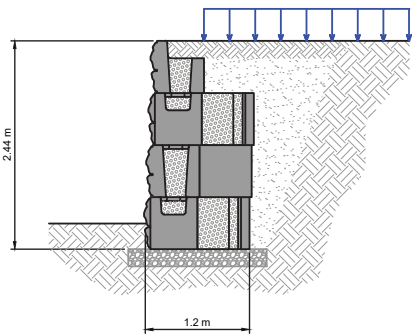
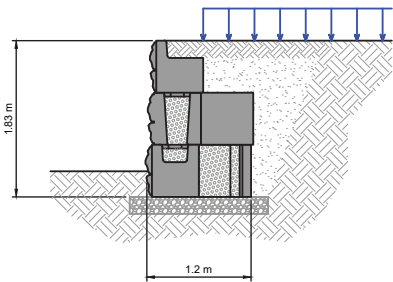
Backslope Angle	0°
Surcharge	0 kPa
Retained Soil	30°
Foundation Soil	30°
Leveling Pad	Crushed Gravel



Surcharge | 12 kPa

Gravity Wall Charts

Backslope Angle	0°
Surcharge	12 kPa
Retained Soil	30°
Foundation Soil	30°
Leveling Pad	Crushed Gravel



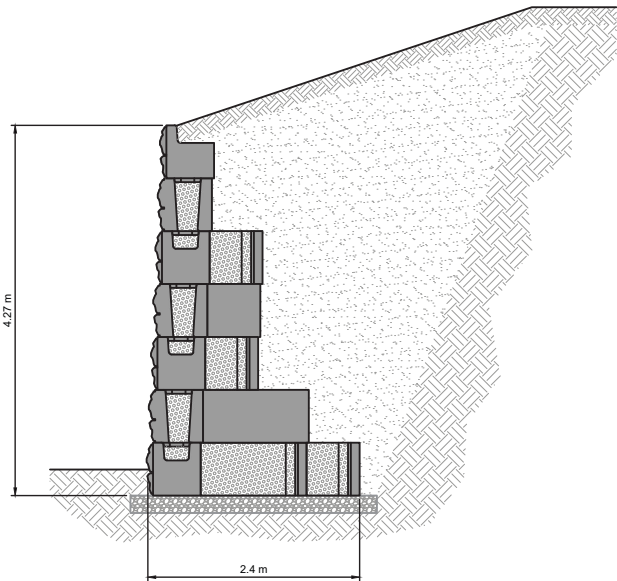
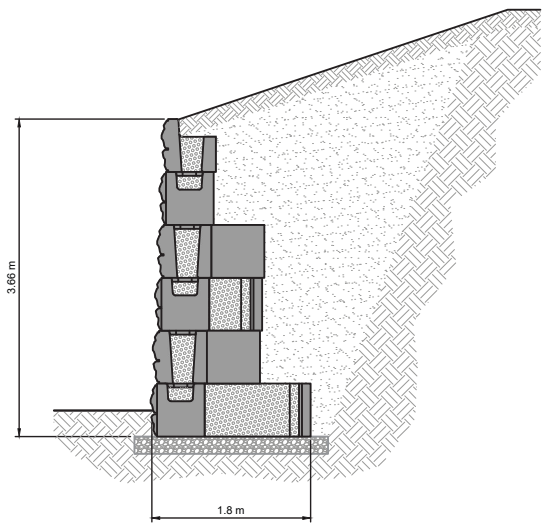
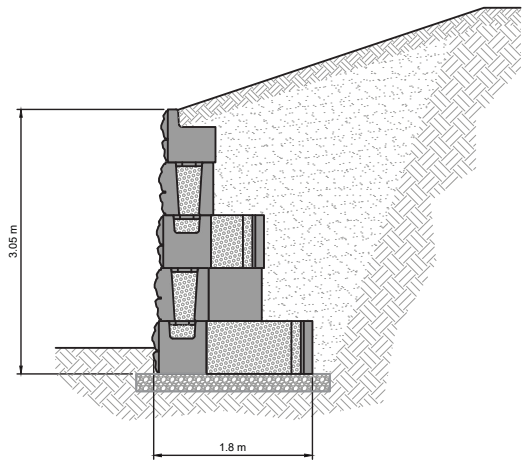
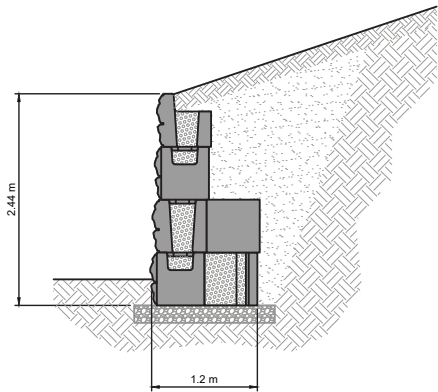
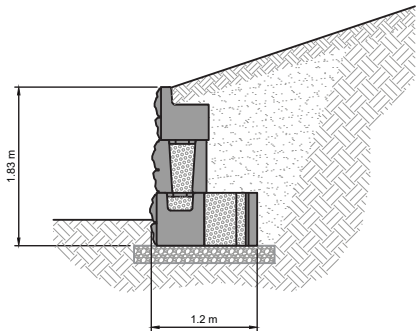
For further information visit
WWW.CIRTEX.COM.AU

Reference NCMA Design Manual for
Segmental Retaining Walls, 3rd Edition

Backslope | 1V:3H

Gravity Wall Charts

Backslope Angle	18.4° 1V:3H
Surcharge	0 kPa
Retained Soil	30°
Foundation Soil	30°
Leveling Pad	Crushed Gravel





DISCLAIMER

All information provided in this document is correct to the best knowledge Cirtex Industries Pty Ltd ("Cirtex") and is given out in good faith. While every effort has been made to ensure the accuracy of the information in this catalogue, Cirtex assumes no responsibility for errors or omissions or for any consequences of reliance on this catalogue. The information presented herein is intended only as a general guide to the use of such products and no responsibility or liability is accepted by Cirtex for any loss or damage however arising, which results either directly or indirectly from use of such information. Cirtex has a policy of continuous development therefore information and product specifications may change without notice. This document is subject to copyright in its entirety. The contents may not be reproduced in any form, either in whole or in part, without written permission from Cirtex. Copyright 2021. All rights reserved.

CIRTEX INDUSTRIES PTY LTD

Head Office 100 Silverwater Rd, Silverwater NSW 2128, Australia
Postal Address PO Box 7138, Silverwater NSW 1811, Australia

1800 012 681 | WWW.CIRTEX.COM.AU