



# MAGNUMSTONE™

## MSE ESTIMATION CHARTS

Form Number: G 018 017

Issue Number: 02

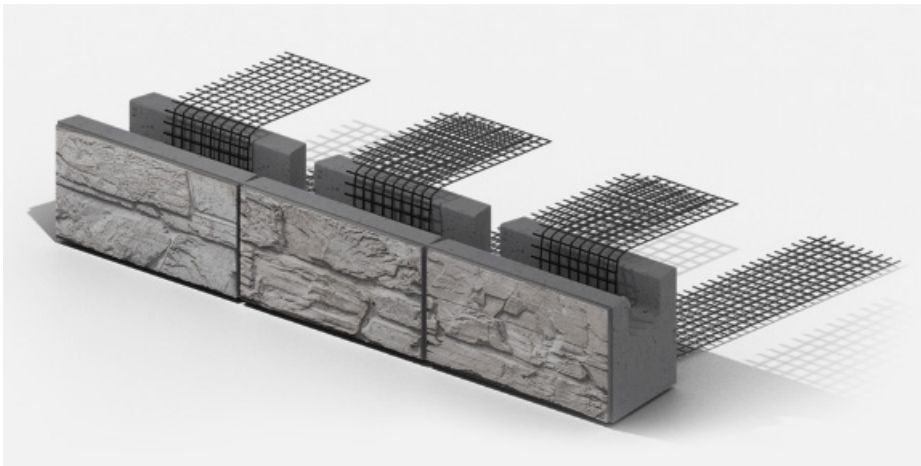
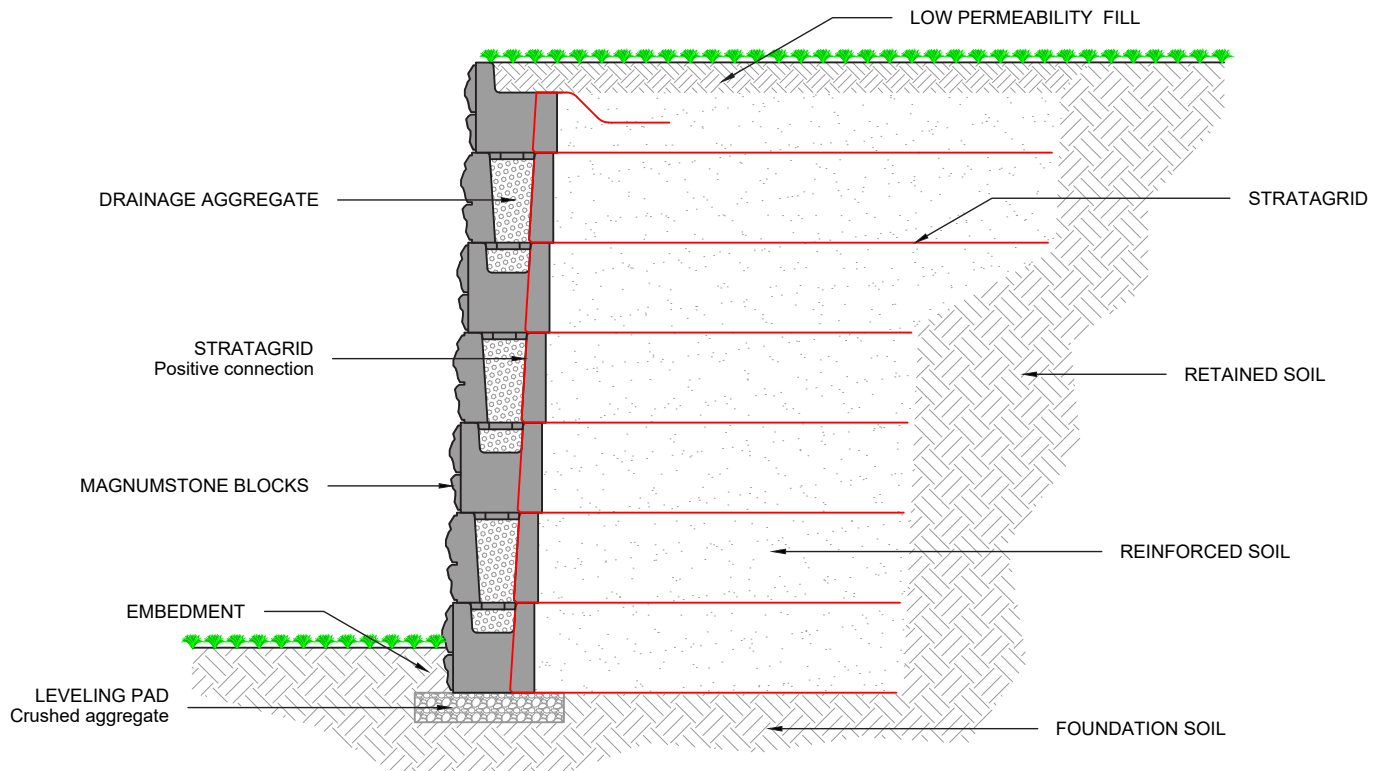
Date: August 2022



1800 012 681 | [WWW.CIRTEX.COM.AU](http://WWW.CIRTEX.COM.AU)



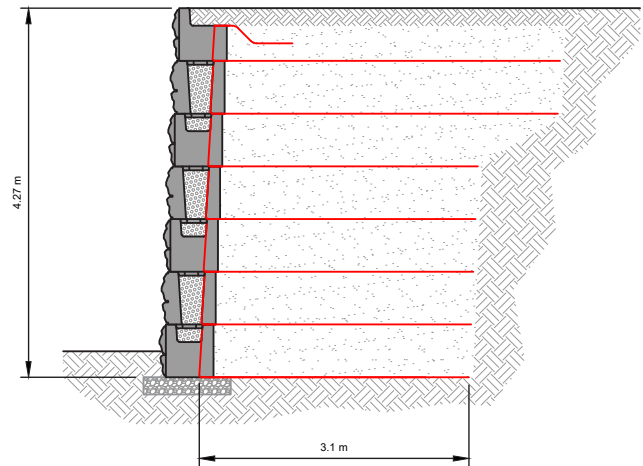
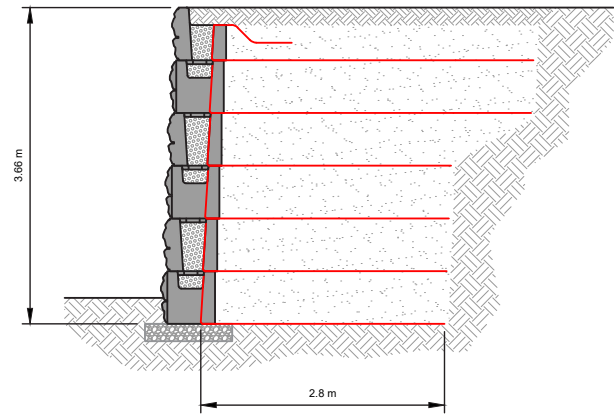
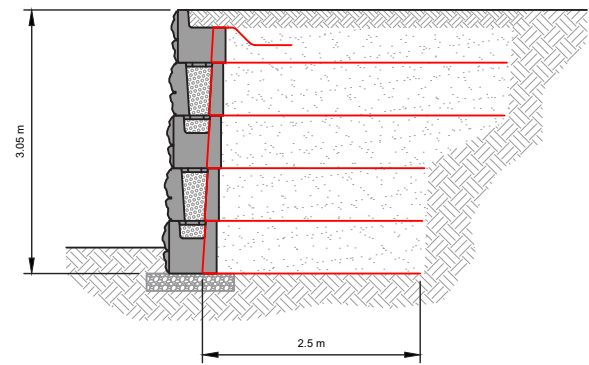
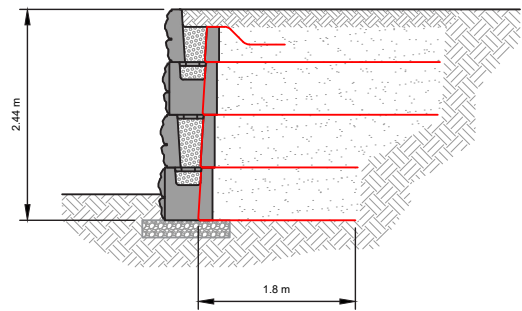
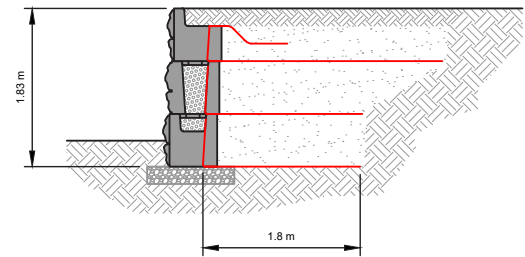
# MSE Retaining Wall Charts



# No Load

## MSE Wall Charts

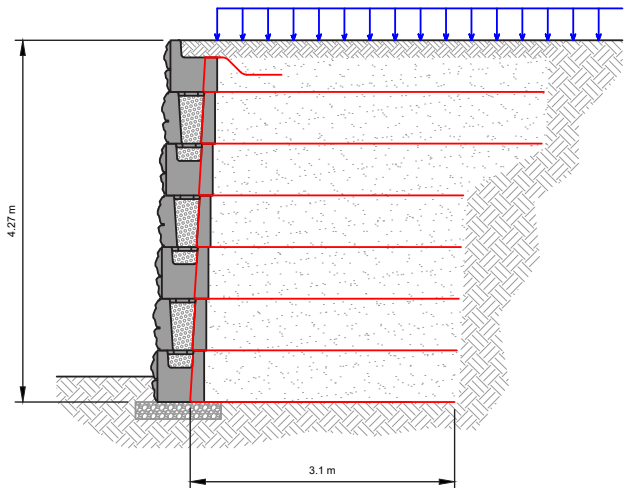
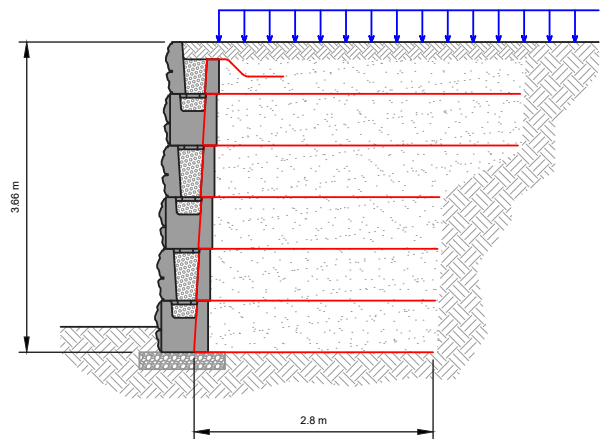
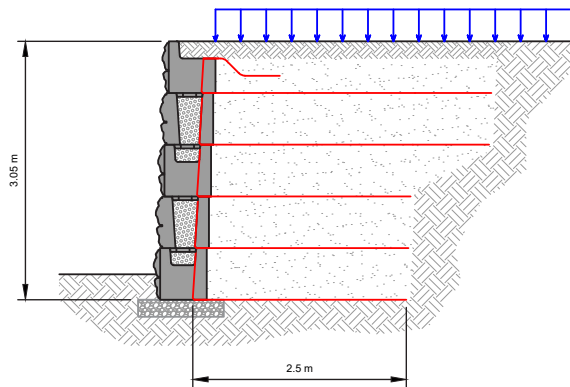
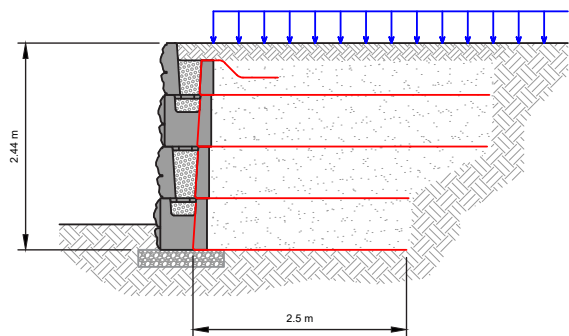
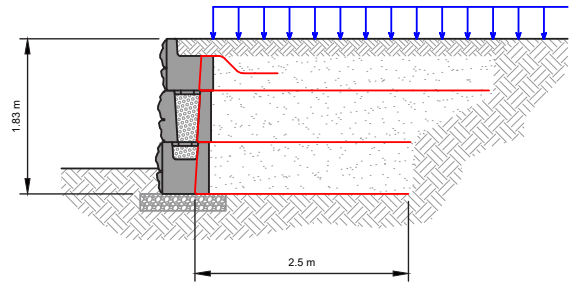
Backslope Angle	0°
Surcharge	0 kPa
Retained Soil	30°
Foundation Soil	30°
Reinforced Soil	34°
Leveling Pad	Crushed Gravel



# Surcharge | 12 kPa

MSE Wall Charts

Backslope Angle	0°
Surcharge	12 kPa
Retained Soil	30°
Foundation Soil	30°
Reinforced Soil	34°
Leveling Pad	Crushed Gravel



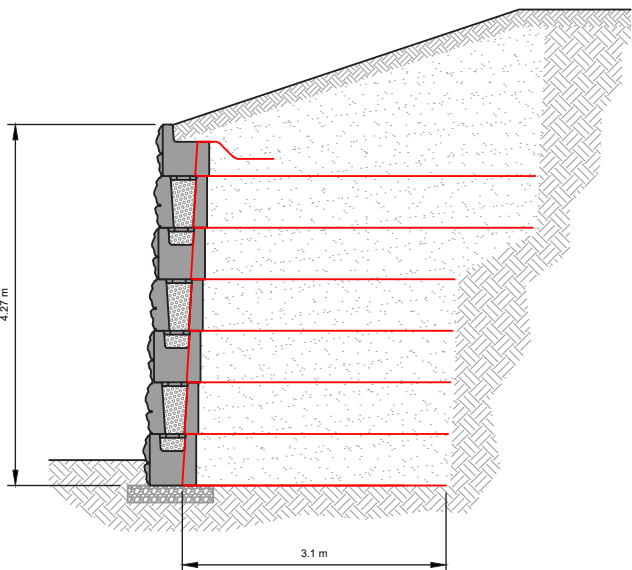
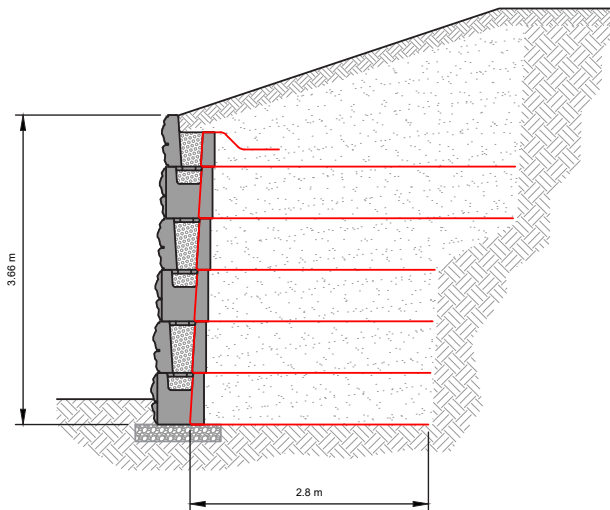
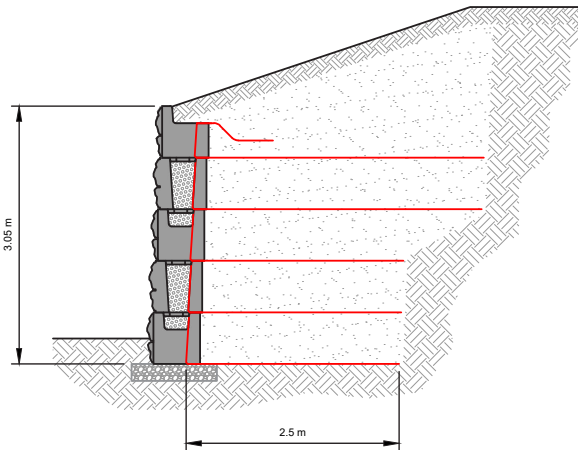
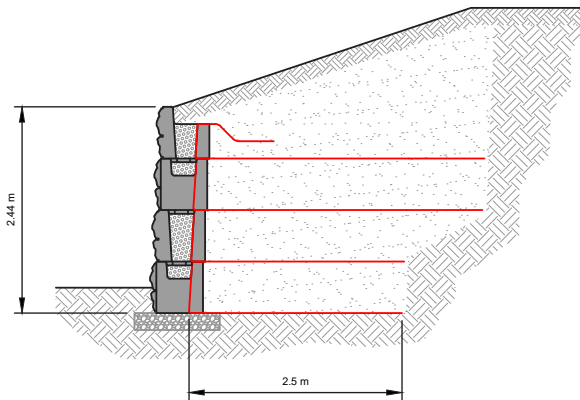
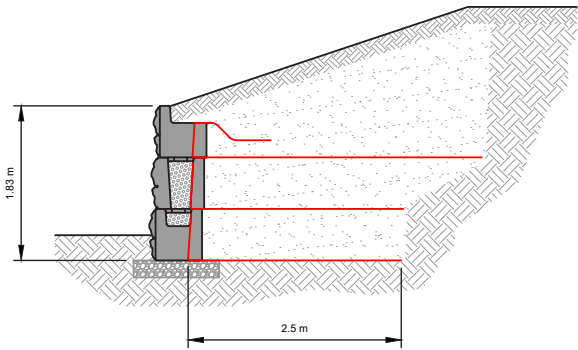
For further information visit  
[WWW.CIRTEX.COM.AU](http://WWW.CIRTEX.COM.AU)

Reference AASHTO LRFD Bridge Design  
Specifications, 9th Edition

# Backslope | 1V:3H

MSE Wall Charts

Backslope Angle	18.4° 1V:3H
Surcharge	0 kPa
Retained Soil	30°
Foundation Soil	30°
Reinforced Soil	34°
Leveling Pad	Crushed Gravel





#### DISCLAIMER

All information provided in this document is correct to the best knowledge Cirtex Industries Pty Ltd ("Cirtex") and is given out in good faith. While every effort has been made to ensure the accuracy of the information in this catalogue, Cirtex assumes no responsibility for errors or omissions or for any consequences of reliance on this catalogue. The information presented herein is intended only as a general guide to the use of such products and no responsibility or liability is accepted by Cirtex for any loss or damage however arising, which results either directly or indirectly from use of such information. Cirtex has a policy of continuous development therefore information and product specifications may change without notice. This document is subject to copyright in its entirety. The contents may not be reproduced in any form, either in whole or in part, without written permission from Cirtex. Copyright 2021. All rights reserved.

---

#### CIRTEX INDUSTRIES PTY LTD

**Head Office** 100 Silverwater Rd, Silverwater NSW 2128, Australia  
**Postal Address** PO Box 7138, Silverwater NSW 1811, Australia

**1800 012 681 | [WWW.CIRTEX.COM.AU](http://WWW.CIRTEX.COM.AU)**