

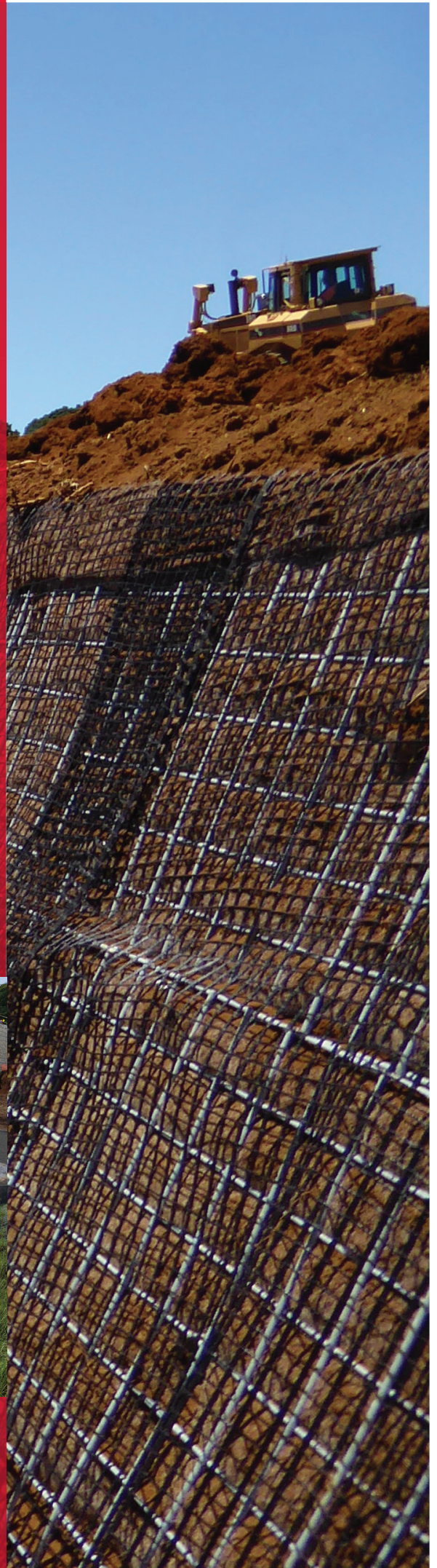


REINFORCED SOIL WALLS + SLOPE STABILITY SYSTEMS

DURASLOPE
DURAGREEN
DURAMESH™



1800 012 681 | WWW.CIRTEX.COM.AU



CIRTEX PROJECT SUPPORT OPTIONS

Our technical support service is available in the initial stages of your project to discuss the options and recommend the best reinforced soil solution for your site.

Our experienced team may also suggest other repair solutions which are applicable besides Reinforced Soil solutions to allow you to compare options. Technical support includes typical solutions, case studies, data sheets etc.

Once you have identified a possible solution for the site, our Project Concept service is the next step. We will provide a comprehensive submission of the wall layout, reinforcement type and spacing and submit a proposal for your perusal. This is invaluable for costing and client submissions. The project concept submission may include CAD drawings, data sheets, internal stability analysis, and global stability analysis as appropriate. **Refer to the Cirtex Project Design Options document, available upon request, for details on what is included in this service.**

Once you have concluded that our project concept is the best option for the site, our third party certified design option may be utilised to provide project sign off. Cirtex can engage a Certified Engineer who is familiar with both the local area and the Cirtex systems to provide design certification if required.

Cirtex Design and Construction Support

Contact Cirtex for an appraisal of your site. We can provide detailed project concepts including reinforcement analysis and layout, CAD drawings and construction methodologies to assist you with achieving the best result.



FOR FURTHER INFORMATION VISIT
WWW.CIRTEX.COM.AU





DuraSlope

REINFORCED SOIL SYSTEM

The DuraSlope system is for slopes up to 45°, utilising primary structural geogrids for internal stability of the slope.

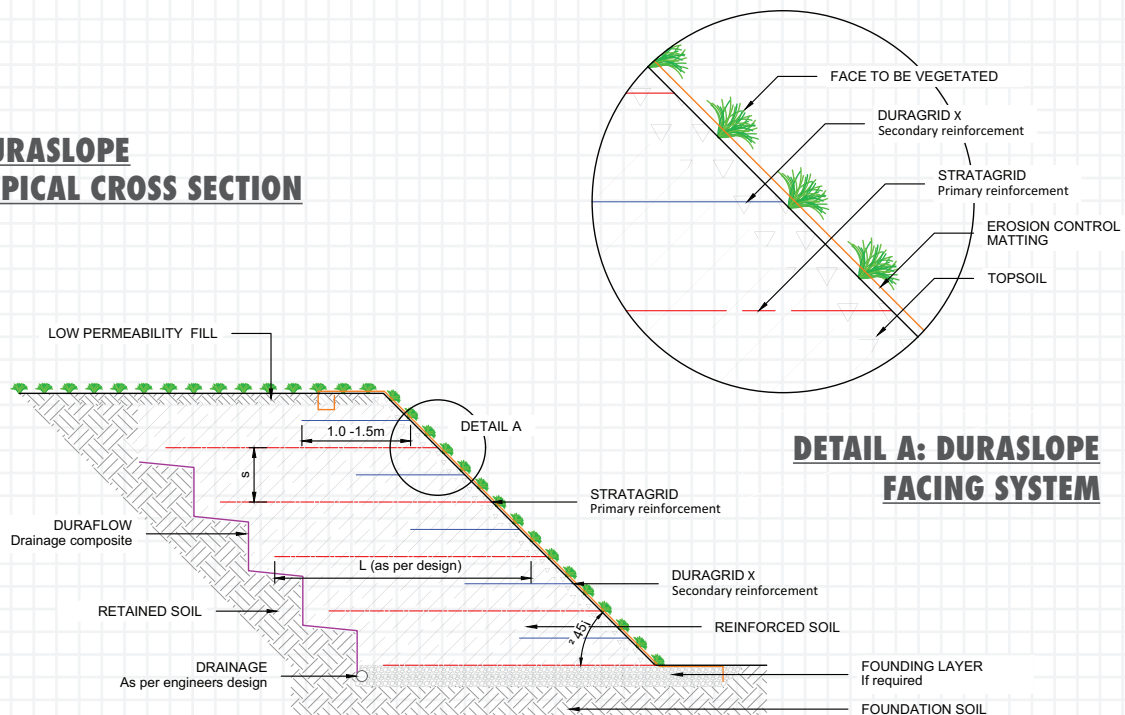
The DuraSlope system will often incorporate a permanent Turf Reinforcement Mat (TRM) laid over the slope surface to prevent erosion and promote vegetative growth at the face.

Reinforced soil walls, also called Mechanically Stabilised Earth Walls (MSEW), are becoming increasingly popular as an economical and effective solution for steepened slopes and retaining walls.

Each DuraSlope reinforced soil system component is individually selected and engineered to work together to provide a structurally sound long term solution. All structural elements are manufactured to strict ISO 9001 procedures and quality assurance data is available to the engineer as required.

Cirtex® can provide design support using the latest slope reinforcement and MSEW programs. Cirtex also provides plans and methodologies in CAD format customised to suit your project. This is available either as a concept service free of charge or as a complete service with producer statement provided. Some costs would be incurred if a producer statement is required.

DURASLOPE TYPICAL CROSS SECTION



DETAIL A: DURASLOPE FACING SYSTEM





FEATURES >

- ✓ Fast construction
- ✓ Increases usable land
- ✓ Naturally vegetated
- ✓ Variable face angles
- ✓ Environmentally friendly
- ✓ Proven and reliable technology
- ✓ Design and construction support



DuraSlope reinforced soil system uses:

- StrataGrid® geogrid (primary geogrid)
- DuraFlow Q drainage composite
- BioCair BC450JR or ECC3 TRM
- DuraGrid X biaxial geogrid (secondary geogrid)

DuraGreen

REINFORCED SOIL SYSTEM

The DuraGreen is a vegetated reinforced soil wall system, also called Mechanically Stabilised Earth Wall (MSEW), that is a proven engineered solution for slopes up to 70°.

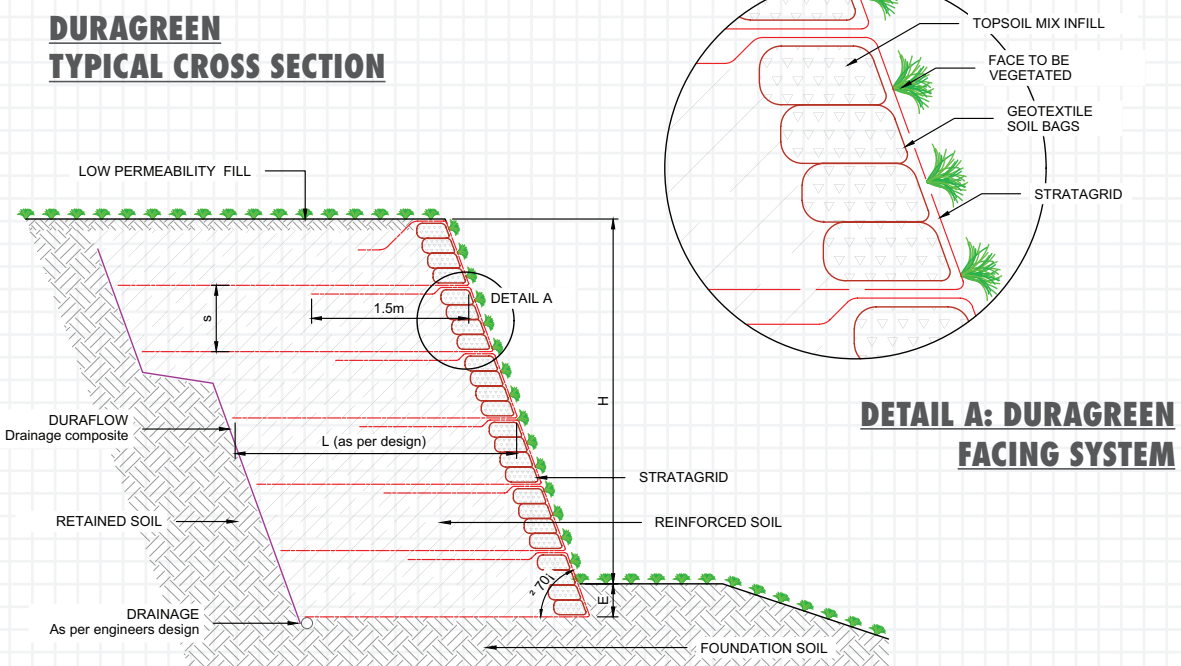
DuraGreen is a cost-effective and fast method to build MSEW systems and consists of StrataGrid® PET geogrid and soil filled facing socks or bags. The facing forms the correct angle and provides a medium for vegetation to establish.

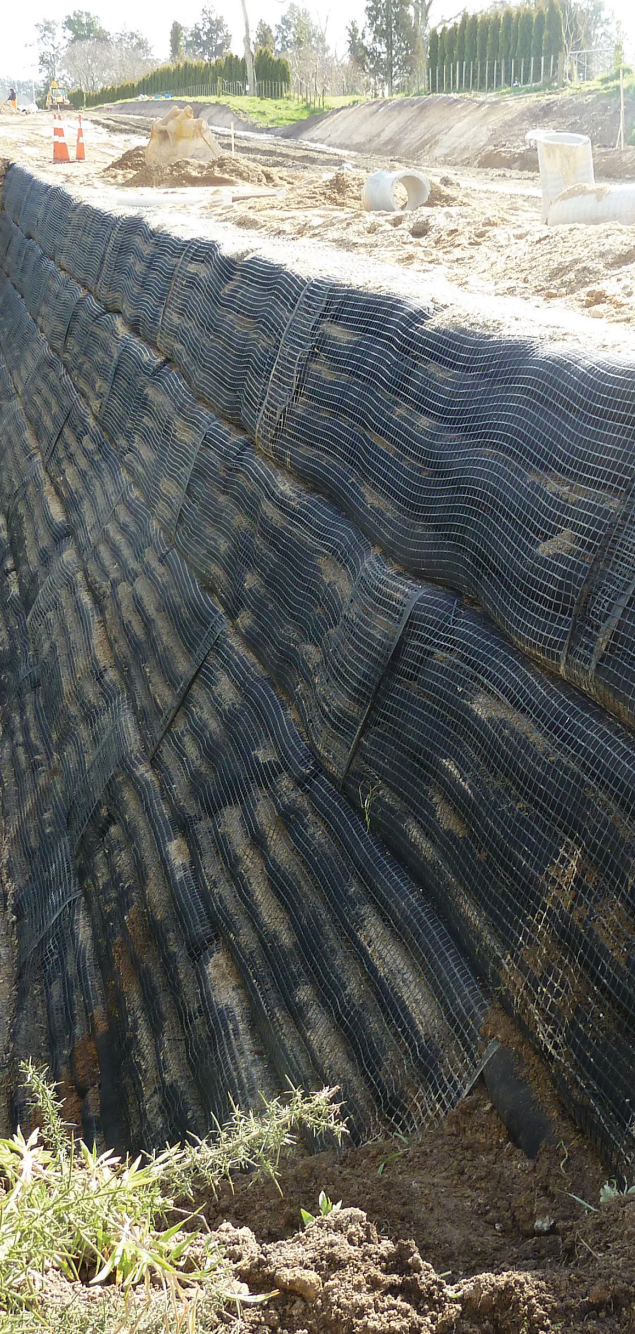
StrataGrid is wrapped around the face to form the face angle, bags or socks filled with soil are used which provides a medium for vegetation to establish in.

MSEW's are becoming increasingly popular as an economical and effective solution for steepened slopes and retaining walls.

Each DuraGreen Reinforced Soil System component is carefully selected and engineered to work together to provide a structurally sound long term solution.

Cirtex® can provide design support using the latest slope reinforcement and MSEW programs. Cirtex also provides plans and methodologies in CAD format customised to suit your project. This is available either as a concept service free of charge or as a complete service with producer statement provided. Some costs would be incurred if a producer statement is required.





DURAGREEN

Code	Product	Size
13681	DuraGreen Soil Filled Bags	800mm x 400mm
13985	DuraGreen Sock	225mm Compost and Seed Filled

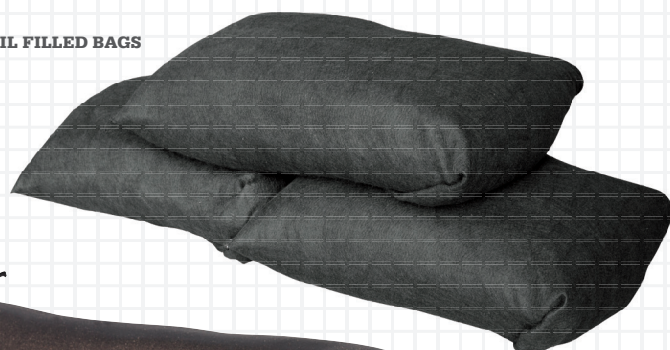
DuraGreen reinforced soil system uses:

- StrataGrid® geogrid (primary geogrid)
- DuraFlow Q drainage composite
- BioCair BC450JR or ECC3 TRM
- DuraGrid X biaxial geogrid (secondary geogrid)

FEATURES >

- ✓ Fast construction
- ✓ Increases usable land
- ✓ Naturally vegetated
- ✓ Variable face angles
- ✓ Environmentally friendly
- ✓ Proven and reliable technology
- ✓ Design and construction support

A DURAGREEN SOIL FILLED BAGS



B DURAGREEN SOCK



DuraMesh™

REINFORCED SOIL SYSTEM

The DuraMesh™ system is a proven, engineered, reinforced soil system allowing MSE (Mechanically Stabilised Earth) walls and slopes to be constructed up to 90° with different visual appearances, from vegetated to providing an economical and effective solution for steepened slopes and retaining walls.

The system consists of the DuraMesh facing panels providing the face support, StrataGrid® PET reinforcement geogrid, and DuraFlow Q drainage composites providing drainage at the back of the MSE mass.

The facing can be vegetated, or a geotextile wrap when there is a concrete facing panel being placed in front of the MSE wall. Cirtex® offers typical plans and methodologies and can customise this to suit your project.

DuraMesh is available in a number of different face angles ranging from 60 to 90 degrees available to meet the requirements of the project. Facing panels are available in a range of materials and coatings: black steel, galvanised steel, galfan + PVC coated steel and stainless steel to meet requirements of the different design service life. Each DuraMesh reinforced soil system component is individually selected and engineered to work together to provide a structurally sound long term solution.

Cirtex can provide design support using the latest slope reinforcement and MSEW programs. Cirtex also provides plans and methodologies in CAD format customised to suit your project. This is available either as a concept service free of charge, or as a complete service with producer statement provided. Some costs would be incurred if a producer statement is required.

FEATURES >

- ✓ **Fast construction**
- ✓ **Increases usable land**
- ✓ **Naturally vegetated**
- ✓ **Variable face angles**
- ✓ **Environmentally friendly**
- ✓ **Proven and reliable** technology
- ✓ **Design and construction support**

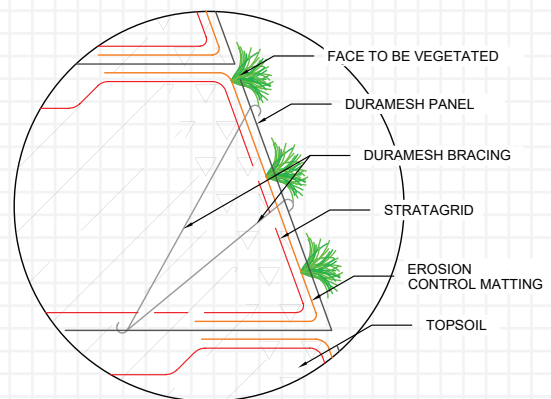
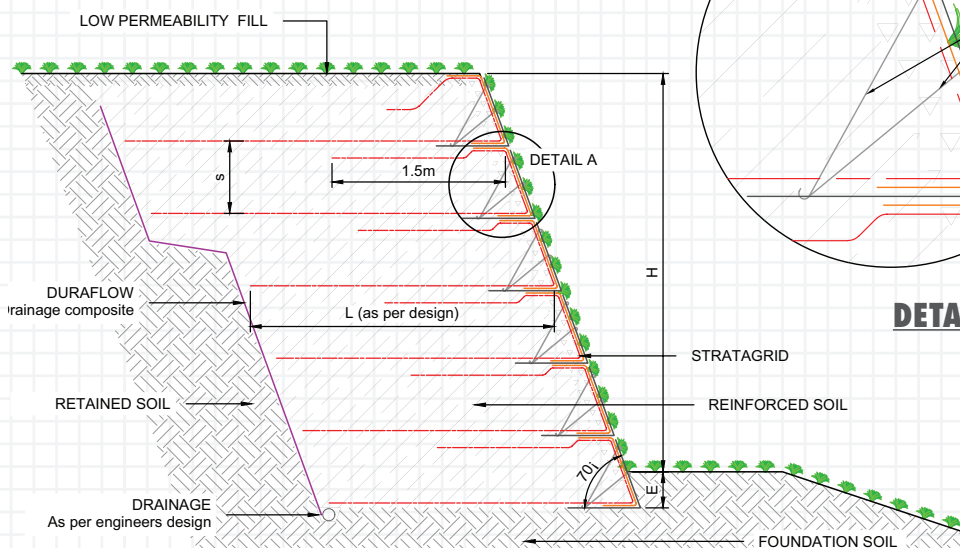




DuraMesh reinforced soil system uses:

- DuraMesh facing panels
- StrataGrid® geogrid
- DuraFlow Q drainage composite
- BioWool or BioCoir

DURAMESH TYPICAL CROSS SECTION



DETAIL A: DURAMESH- FACING SYSTEM

DuraMesh™

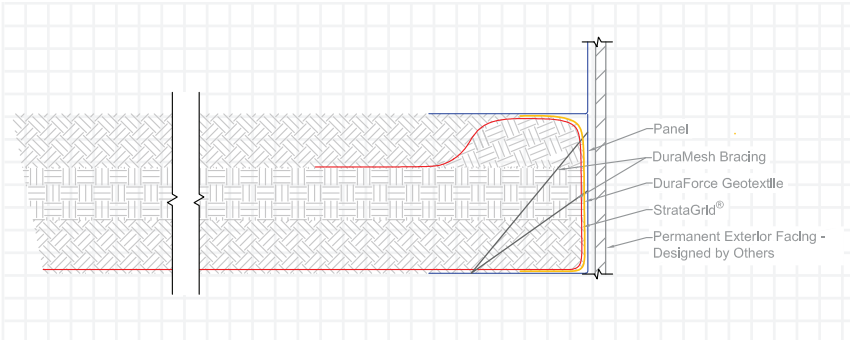
VENEERED APPLICATIONS

The DuraMesh™ Mechanically Stabilised Earth (MSE) system can be very effectively used in retaining wall and bridge abutment applications where a decorative concrete tilt panel or other veneer finish is desired.

In veneered applications, the standard DuraMesh system primary components are utilised including DuraMesh galvanised facing panels, the StrataGrid® PET reinforcement geogrid, DuraFlow Q, drainage composite and DuraForce® geotextile to provide a separation layer inside the panels to contain the MSE wall granular backfill.

The DuraMesh MSE system is a solution that is very fast and easy to construct and will provide a more dimensionally accurate and tidier finish when compared with traditional MSE facing methodologies including sand bags and shutters.

Cirtex can provide MSE design assistance and can customise the DuraMesh components to suit the height and finished angle of the wall which typically ranges between 60 and 90 degrees.



Sleeve-It®

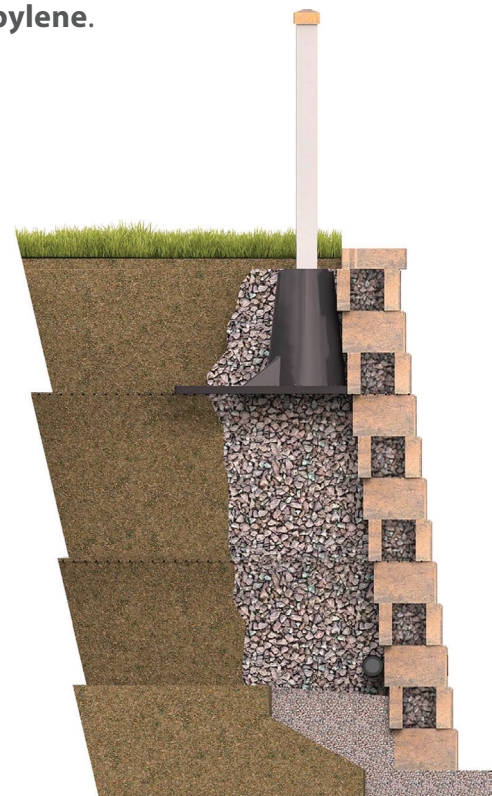
POST ANCHORING SYSTEM



Sleeve-It® SD-1 is a pre-engineered fence post anchoring solution for enhancing below-grade foundational stability in fences placed on top of a segmental retaining wall (SRW). Sleeve-It's patent pending design allows stable fence footings to be integrated into the support structure of the SRW while it is being constructed. Due to its cantilevered form and other properties, using Sleeve-It during the SRW build allows a fence to be built close to the wall edge, eliminating the need for a setback.

FEATURES >

- ✓ Sleeve-It is **compliant with IBC 1015.2, IBC 1607.8.1 and ASCE 7 4.5.1.**
- ✓ **Eliminates** the offset **requirement for rails and fences within 900mm** of the edge of the open side of a SRW.
- ✓ Lightweight, unitary design makes Sleeve-It **easy to stack, store and transport to job sites** – reducing stocking space, shipping costs and labour requirements.
- ✓ Seamlessly **integrates into the SRW construction** process and eliminates the hassle of auguring once the wall is complete.
- ✓ Sleeve-It is designed to **accommodate** the most **common SRW fence types.**
- ✓ Sleeve-It is **made with ~95% post-consumer recycled polypropylene.**



DURASLOPE DURAGREEN DURAMESH™

BENEFITS

Fast construction | Increases usable land |
Natural vegetated

Variable face angles | Proven and reliable
technology | Design & construction support

CIRTEX SOLUTIONS

- ✓ Pavements, Embankments
and Raft Foundations
- ✓ Reinforced Soil Walls
- ✓ Stormwater Management Systems
- ✓ Slope Stability Systems
- ✓ Earth Anchoring Systems
- ✓ Subsoil Drainage Filtration
- ✓ Retaining Walls
- ✓ Coastal Protection
- ✓ Surfacing Reinforcement
- ✓ Landfill and Environmental
Barrier Systems
- ✓ Dewatering
- ✓ Erosion and Sediment Control
- ✓ Site Supplies
- ✓ Permeable Paving
- ✓ Landscape Edging
and Paver Restraints



CIRTEX INDUSTRIES LTD

Head Office 100 Silverwater Rd,
Silverwater NSW 2128, Australia
Postal Address PO Box 7138,
Silverwater NSW 1811, Australia

1800 012 681
WWW.CIRTEX.COM.AU

DISCLAIMER

All information provided in this document is correct to the best knowledge Cirtex Industries Pty Ltd ("Cirtex") and is given out in good faith. While every effort has been made to ensure the accuracy of the information in this catalogue, Cirtex assumes no responsibility for errors or omissions or for any consequences of reliance on this catalogue. The information presented herein is intended only as a general guide to the use of such products and no responsibility or liability is accepted by Cirtex for any loss or damage however arising, which results either directly or indirectly from use of such information. Cirtex has a policy of continuous development therefore information and product specifications may change without notice. This document is subject to copyright in its entirety. The contents may not be reproduced in any form, either in whole or in part, without written permission from Cirtex. Copyright 2022. All rights reserved.

